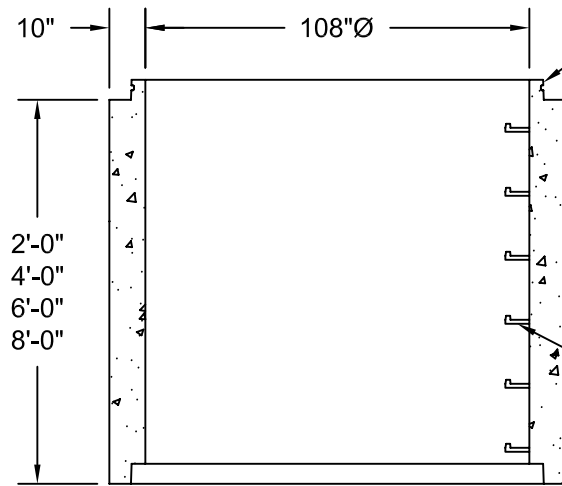


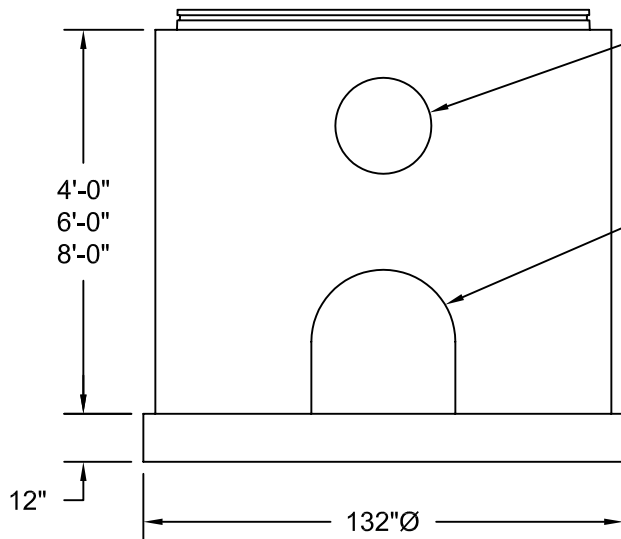
Standard Riser Sections



Riser Sections Available With ASTM C-443 O-Ring Joints

Steel Reinforced Polypropylene Manhole Steps @ 16" C-C

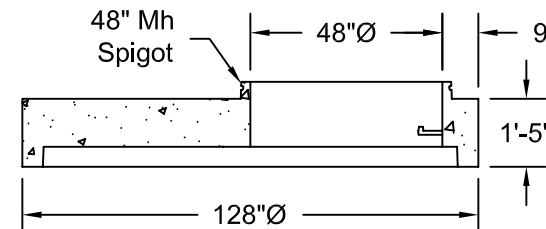
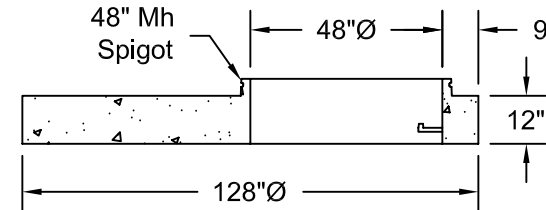
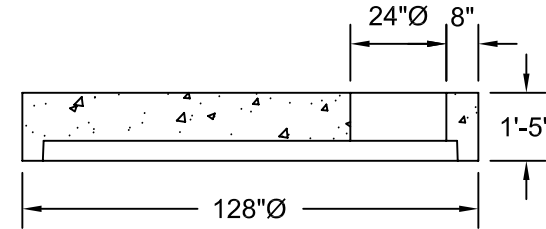
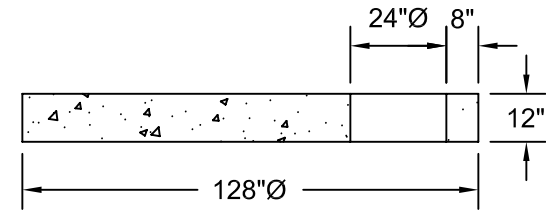
Standard Bottom Sections



Openings As Required  
Plain Openings  
Kor-N-Seal Press Wedge  
Or A-Lok

Standard Openings As Required

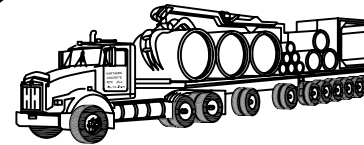
Standard 108" Reducers



Note:

All Manhole Pipe And Reducers Are Manufactured To ASTM C-478 Specifications.

108" To 24" Reducers Are Available w/ 5/8" Threaded Inserts For Bolting Down E.J.I.W. #1040 WT Manhole Frame & Cover.



*Northern Concrete Pipe, Inc.*

401 Kelton Street Bay City, MI 48706 1 800 222 9918  
5281 Lansing Road Charlotte, MI 48813 1 800 874 9701

108"Ø Standard Precast Concrete Manhole Sections

Date 21 Sep 98	Revised	Drawn By BmG	Scale NTS	2.5a
-------------------	---------	-----------------	--------------	------