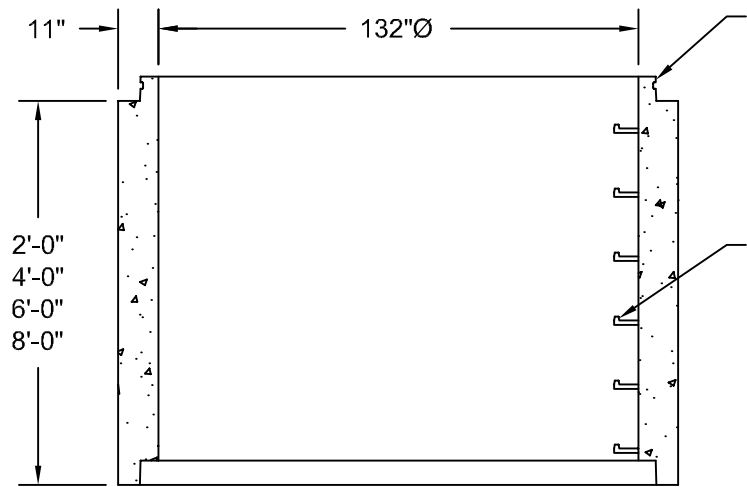


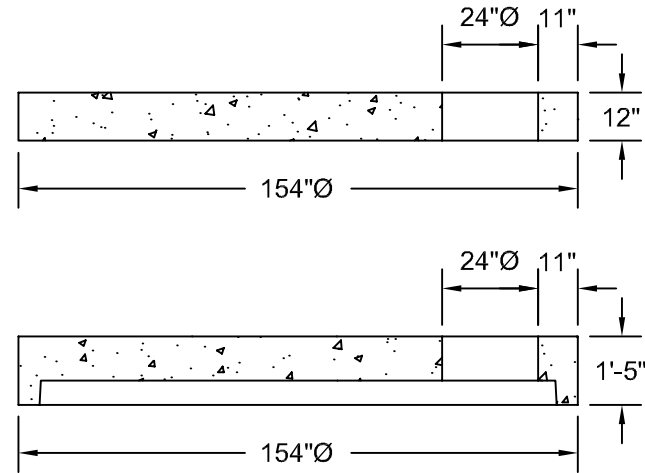
Standard Riser Sections



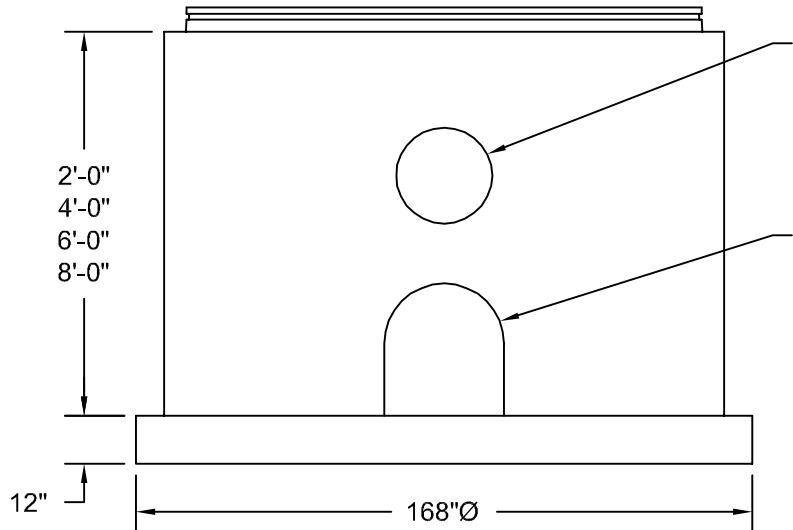
Riser Sections Available With ASTM C-443 O-Ring Joints

Steel Reinforced Polypropylene Manhole Steps @ 16" C-C

Standard 132" Reducers

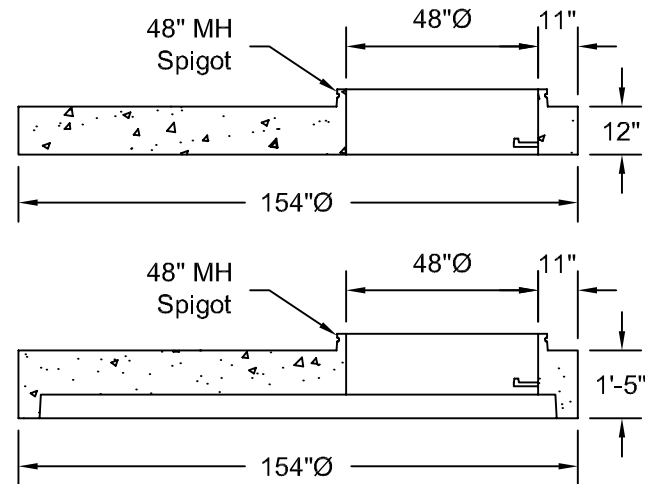


Standard Bottom Sections



Openings As Required Plain Openings Kor-N-Seal Press Wedge Or A-Lok

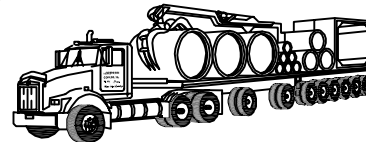
Standard Openings As Required



Note:

All Manhole Pipe And Reducers Are Manufactured To ASTM C-478 Specifications.

132" To 24" Reducers Are Available w/ 5/8" Threaded Inserts For Bolting Down E.J.I.W. #1040 WT Frame & Cover.



*Northern Concrete Pipe, Inc.*

401 Kelton Street Bay City, MI 48706 1 800 222 9918  
5281 Lansing Road Charlotte, MI 48813 1 800 874 9701

132"Ø Standard Precast Concrete Manhole Sections

Date	Revised	Drawn By	Scale	
05 Nov 98		BmG	NTS	2.7