

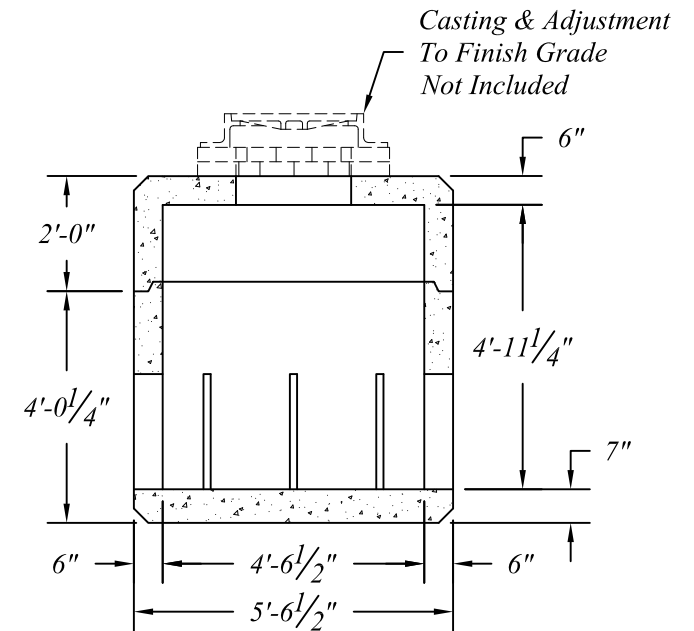
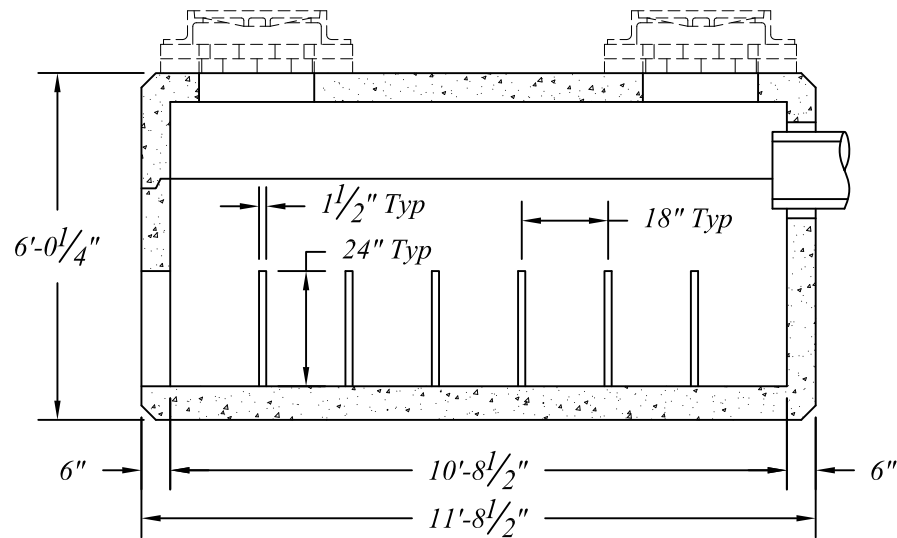
Dry Well Sections To Be Manufactured per AASHTO 17th Ed. and ASTM Specifications w/HS-25 Loading and 0.0' to 3.0' of Earth Cover.

Concrete: 5000psi @ 28 Days

Reinforcement per ASTM A-615 & A-496..

Cover To Be Sealed w/1/2" EZ-Stik or Equal.

Pipe & Fittings For Inlets & Outlets Are Not Included.



Base - 15,000 #
 Cover - 7,900 #
 Total - 22,900 #

NORTHERN CONCRETE PIPE



401 Kelton Street
 Bay City, MI 48706
 1 800 222 9918

5281 Lansing Road
 Charlotte, MI 48813
 1 800 874 9701

Proposed - 1750 Gal. Traffic Concrete Dry Well

Date	Revised	Rev. No.	Drawn By	Scale
06 Feb 07	16 Mar 07	1	BmG	1 : 40