

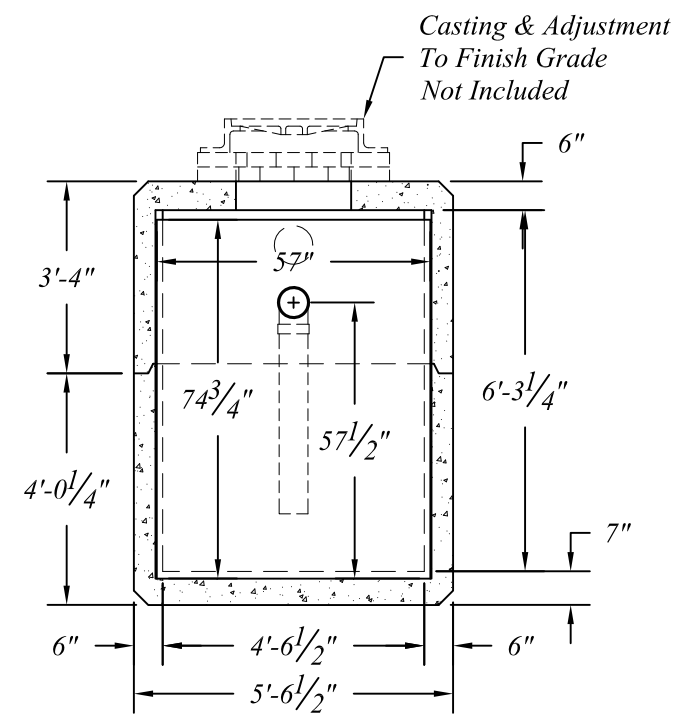
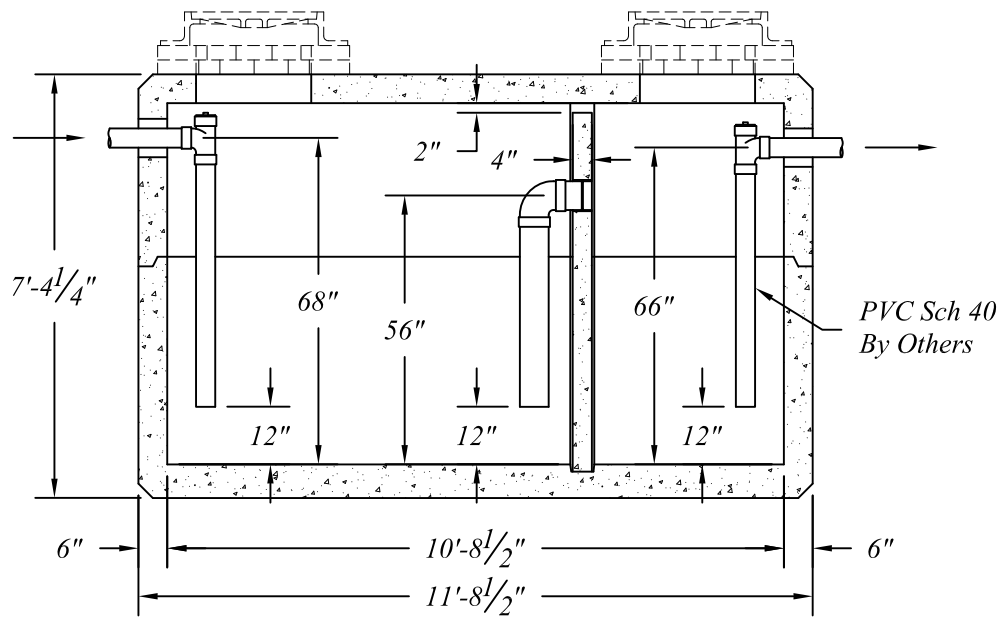
Interceptor/Grease Trap Sections To Be Manufactured per AASHTO 17th Ed. and ASTM Specifications w/HS-25 Loading and 0.0' to 3.0' of Earth Cover.

Concrete: 5000psi @ 28 Days

Reinforcement per ASTM A-615 & A-496..

Cover To Be Sealed w/1/2" EZ-Stik or Equal.

Pipe & Fittings For Inlets & Outlets Are Not Included.



- Base - 15,000 #
- Weir - 1,450 #
- Cover - 11,100 #
- Total - 27,550 #

NORTHERN CONCRETE PIPE



401 Kelton Street
Bay City, MI 48706
1 800 222 9918

5281 Lansing Road
Charlotte, MI 48813
1 800 874 9701

Proposed - 2000 Gal. Traffic Interceptor/Grease Trap

Date 01 Feb 07	Revised 21 Aug 08	Rev. No. 1	Drawn By BmG	Scale 1 : 40
-------------------	----------------------	---------------	-----------------	-----------------