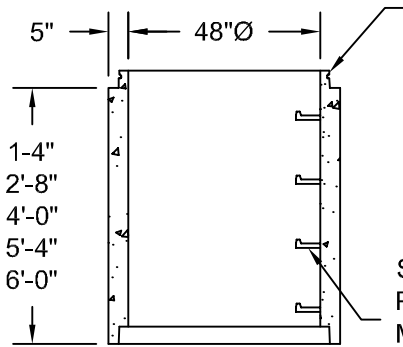


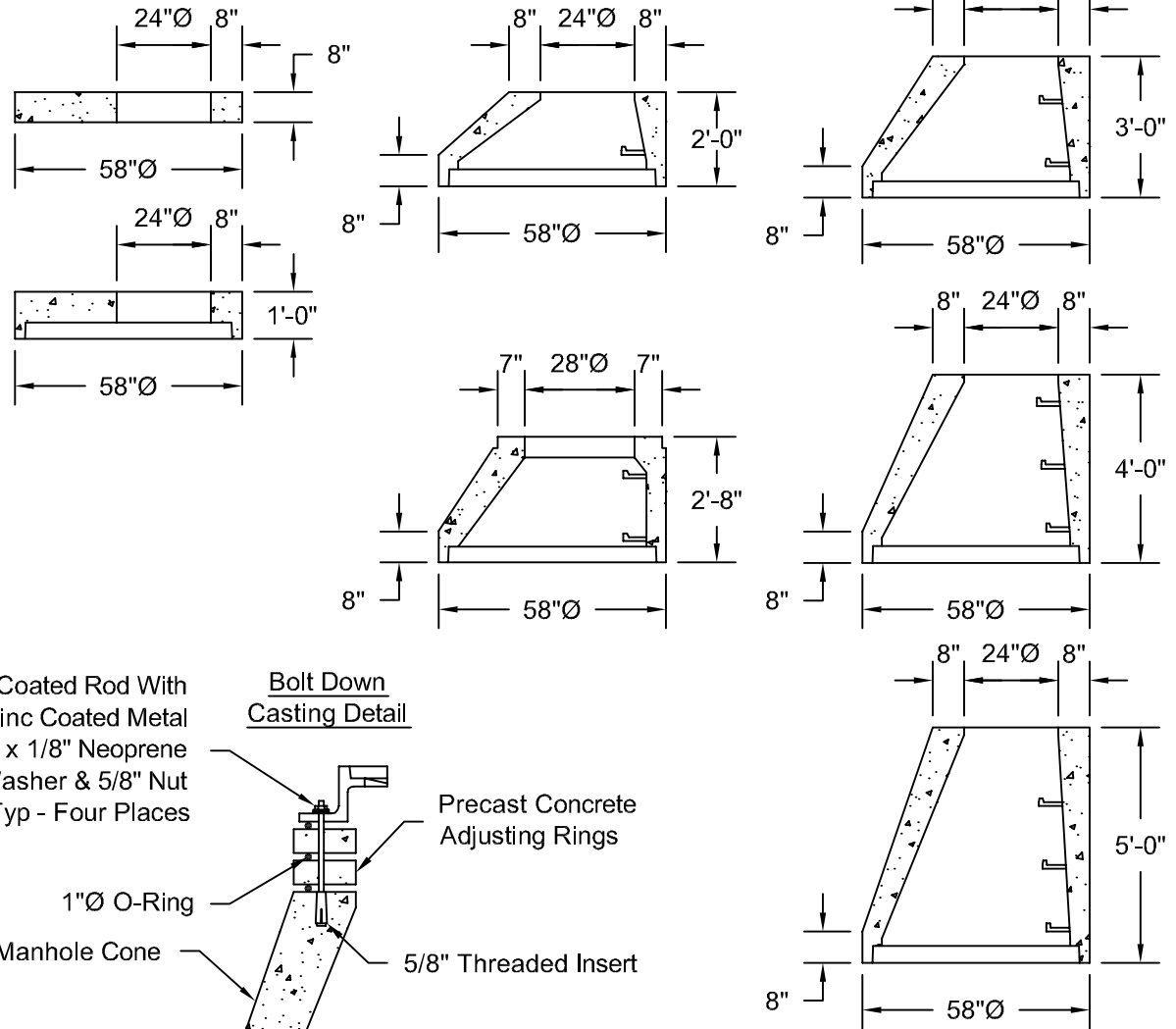
**Standard Riser Sections**



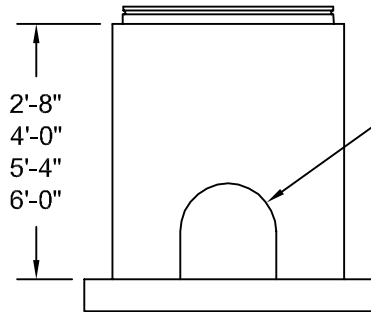
Riser Sections Available With ASTM C-443 O-Ring Joints

Steel Reinforced Polypropylene Manhole Steps @ 16" C-C

**Standard Manhole Cones**



**Standard Bottom Sections**

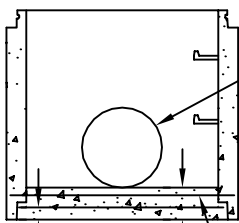


Standard Openings As Required

**Standard Bases**

- 66"Ø x 6"
- 72"Ø x 6"
- 72"Ø x 8"

**Alternate Integral Base Detail**

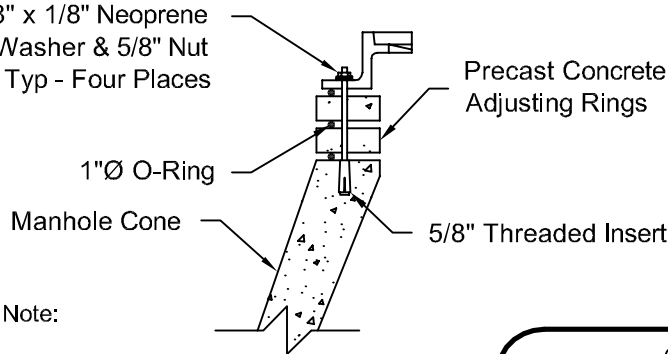


Openings As Req'd Plain Kor-N-Seal Press Wedge Or A-Lok

1 - #4 Bar With 0.120 in<sup>2</sup> Mesh Mat As Shown

5/8" Cadmium Coated Rod With 5/8" x 1/8" Zinc Coated Metal Washer, 5/8" x 1/8" Neoprene Sealing Washer & 5/8" Nut Typ - Four Places

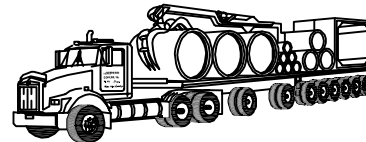
**Bolt Down Casting Detail**



Note:

All Manhole Pipe And Cones Are Manufactured To ASTM C-478 Specifications.

All Cones Are Available w/ 5/8" Threaded Inserts And O-Rings For Bolting Down E.J.I.W. #1040-Z WT Manhole Frame & Cover. See Detail.



*Northern Concrete Pipe, Inc.*

401 Kelton Street Bay City, MI 48706 1 800 222 9918  
5281 Lansing Road Charlotte, MI 48813 1 800 874 9701

**48"Ø Standard Precast Concrete Manhole Sections**

Date 18 Sep 98	Revised 24 Aug 01	Drawn By BmG	Scale NTS	<b>2.1</b>
-------------------	----------------------	-----------------	--------------	------------