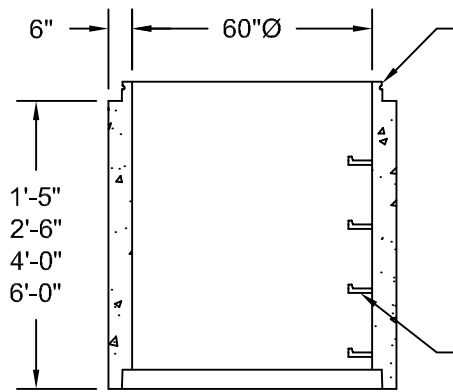


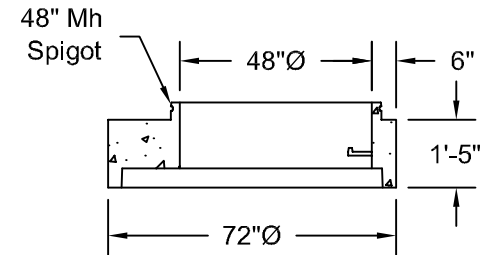
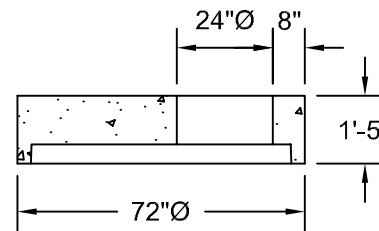
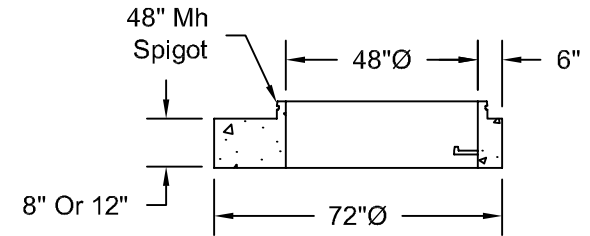
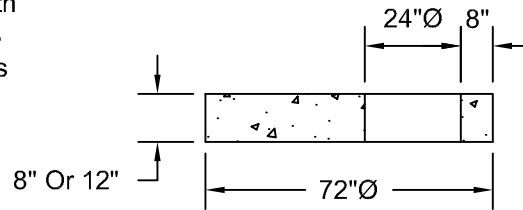
Standard Riser Sections



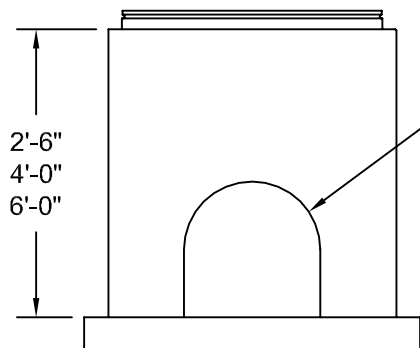
Riser Sections Available With ASTM C-443 O-Ring Joints

Steel Reinforced Polypropylene Manhole Steps @ 16" C-C

Standard 60" Reducers

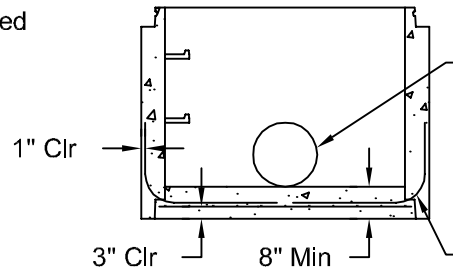


Standard Bottom Sections



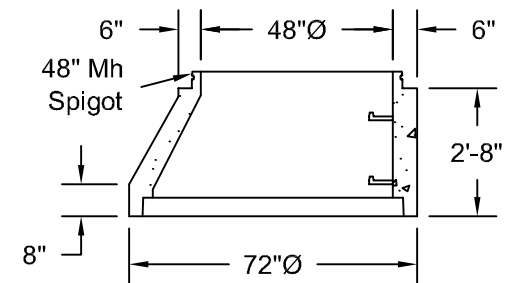
Standard Openings As Required

Alternate Integral Base Detail



Openings As Required  
Plain Openings  
Kor-N-Seal  
Press Wedge  
Or A-Lok

2 - #4 Bars  
As Shown  
Placed @ 90°  
Intervals



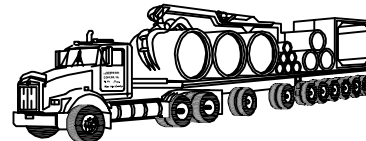
Standard Bases

- 84"Ø x 8"
- 84"Ø x 10"
- 84"Ø x 12"

Note:

All Manhole Pipe And Reducers Are Manufactured To ASTM C-478 Specifications.

60" To 24" Reducers Are Available w/ 5/8" Threaded Inserts & O-Rings For Bolting Down E.J.I.W. #1040 WT Manhole Frame & Cover.



*Northern Concrete Pipe, Inc.*

401 Kelton Street      5281 Lansing Road  
Bay City, MI 48706      Charlotte, MI 48813  
1 800 222 9918      1 800 874 9701

60"Ø Standard Precast Concrete Manhole Sections

Date 21 Sep 98	Revised	Drawn By BmG	Scale NTS	<b>2.2</b>
-------------------	---------	-----------------	--------------	------------