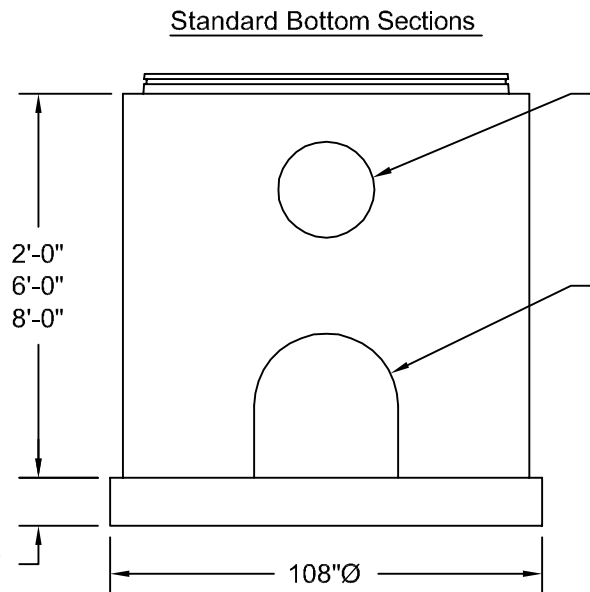


Riser Sections Available With ASTM C-443 O-Ring Joints

Steel Reinforced Polypropylene Manhole Steps @ 16" C-C



Openings As Required Plain Openings Kor-N-Seal Press Wedge Or A-Lok

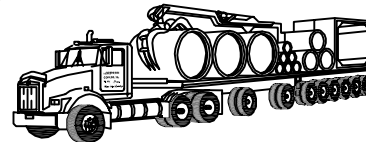
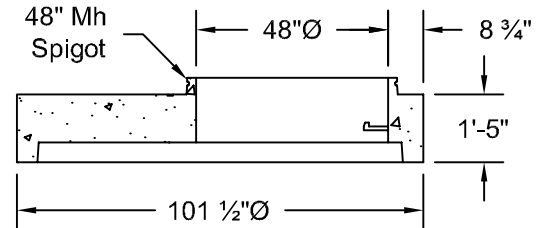
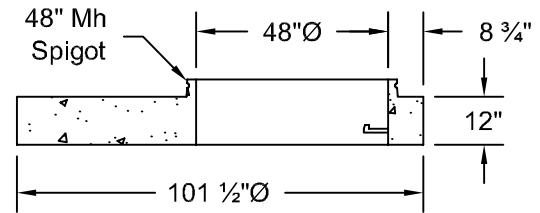
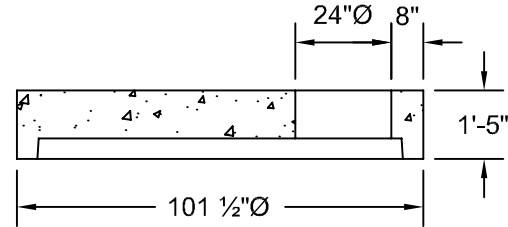
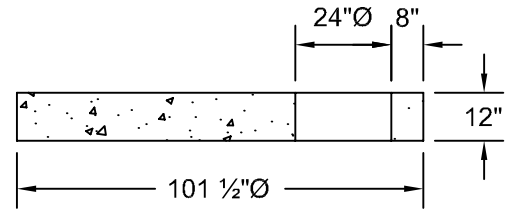
Standard Openings As Required

Note:

All Manhole Pipe And Reducers Are Manufactured To ASTM C-478 Specifications.

84" To 24" Reducers Are Available w/ 5/8" Threaded Inserts For Bolting Down E.J.I.W. #1040 WT Manhole Frame & Cover.

Standard 84" Reducers



*Northern Concrete Pipe, Inc.*

401 Kelton Street Bay City, MI 48706 1 800 222 9918  
5281 Lansing Road Charlotte, MI 48813 1 800 874 9701

84"Ø Standard Precast Concrete Manhole Sections

Date 21 Sep 98	Revised	Drawn By BmG	Scale NTS	2.4
-------------------	---------	-----------------	--------------	-----