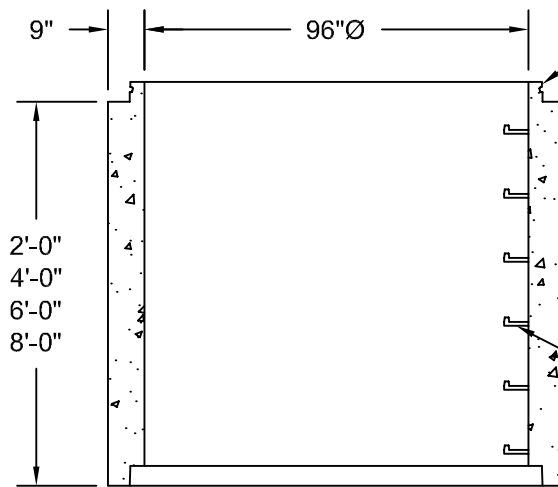


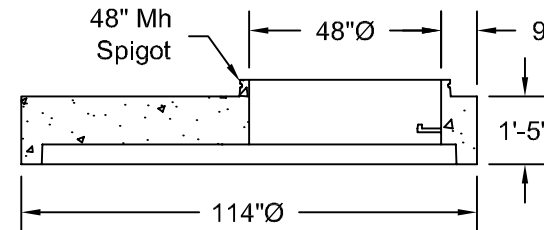
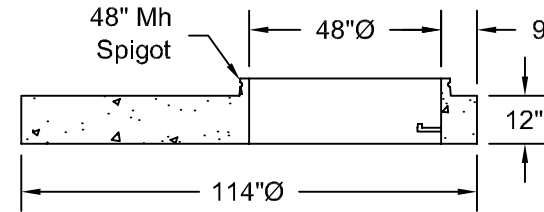
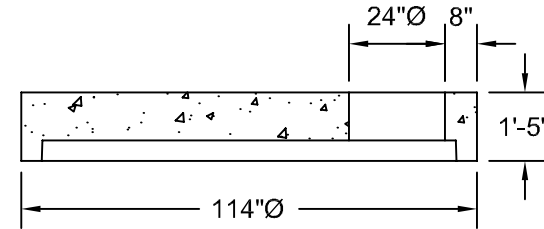
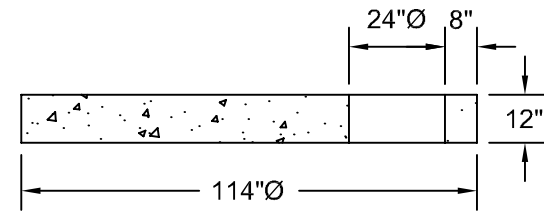
Standard Riser Sections



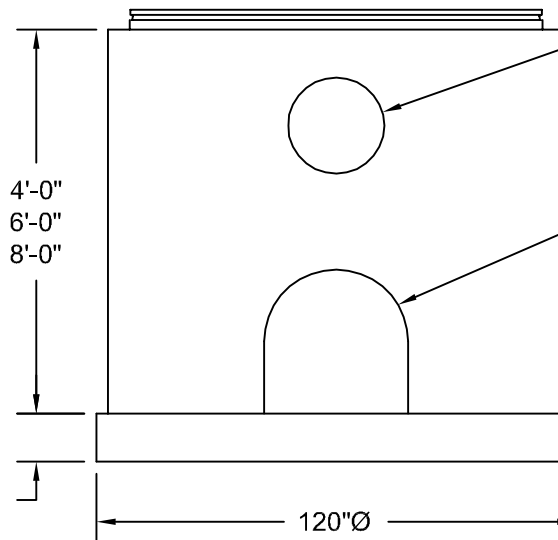
Riser Sections Available With ASTM C-443 O-Ring Joints

Steel Reinforced Polypropylene Manhole Steps @ 16" C-C

Standard 96" Reducers



Standard Bottom Sections



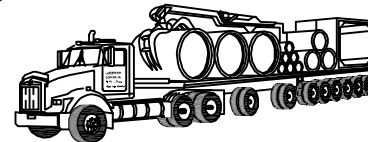
Openings As Required  
Plain Openings  
Kor-N-Seal Press Wedge  
Or A-Lok

Standard Openings As Required

Note:

All Manhole Pipe And Reducers Are Manufactured To ASTM C-478 Specifications.

96" To 24" Reducers Are Available w/ 5/8" Threaded Inserts For Bolting Down E.J.I.W. #1040 WT Manhole Frame & Cover.



*Northern Concrete Pipe, Inc.*

401 Kelton Street      5281 Lansing Road  
Bay City, MI 48706      Charlotte, MI 48813  
1 800 222 9918      1 800 874 9701

**96"Ø Standard Precast Concrete Manhole Sections**

Date	Revised	Drawn By	Scale	
21 Sep 98		BmG	NTS	2.5