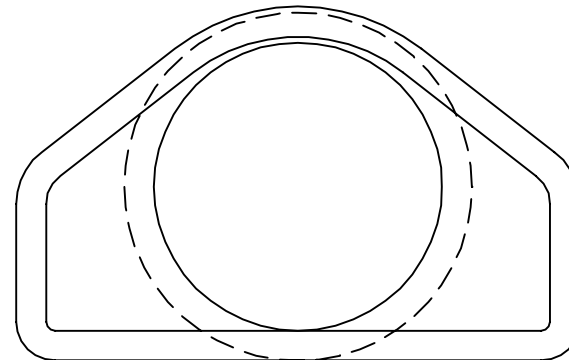
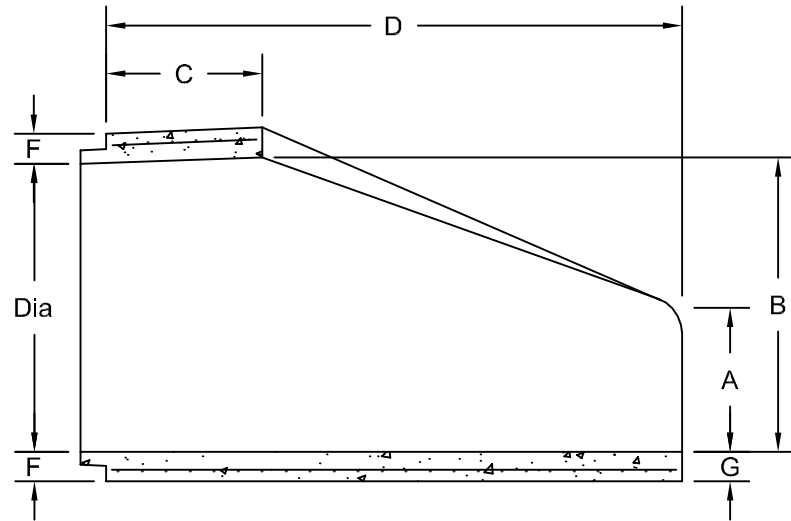


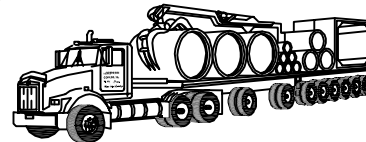
Dia	A	B	C	D	E	F	G
12"	4"	13"	45 ³ / ₈ "	69 ³ / ₈ "	24"	4 ⁵ / ₈ "	4 ⁵ / ₈ "
15"	6"	16"	42 ¹ / ₂ "	69 ¹ / ₂ "	30"	4 ¹¹ / ₁₆ "	4 ¹¹ / ₁₆ "
18"	9"	19"	42"	69"	36"	4 ¹ / ₂ "	4 ¹ / ₂ "
24"	9 ¹ / ₂ "	25"	43 ¹ / ₂ "	69"	48"	4 ¹ / ₂ "	4 ¹ / ₂ "
30"	14"	31"	19"	72"	60"	3 ¹ / ₂ "	3 ¹ / ₂ "
36"	17"	37"	34 ¹ / ₂ "	96"	72"	4"	4"
42"	22"	43"	32 ¹ / ₂ "	96"	78"	4 ¹ / ₂ "	4 ¹ / ₂ "
48"	24"	49"	23 ¹ / ₂ "	96"	84"	5"	5"



Note:

Flared End Sections Are Manufactured To ASTM C-76-II Specifications.

54" Thru 84" Flared End Sections Are Available By Special Order.



Northern Concrete Pipe, Inc.

401 Kelton Street 5281 Lansing Road
 Bay City, MI 48706 Charlotte, MI 48813
 1 800 222 9918 1 800 874 9701

12"Ø To 48"Ø Precast Concrete Flared End Sections

Date 18 Sep 98	Revised 26 Aug 03	Drawn By BmG	Scale NTS	1.10
-------------------	----------------------	-----------------	--------------	------