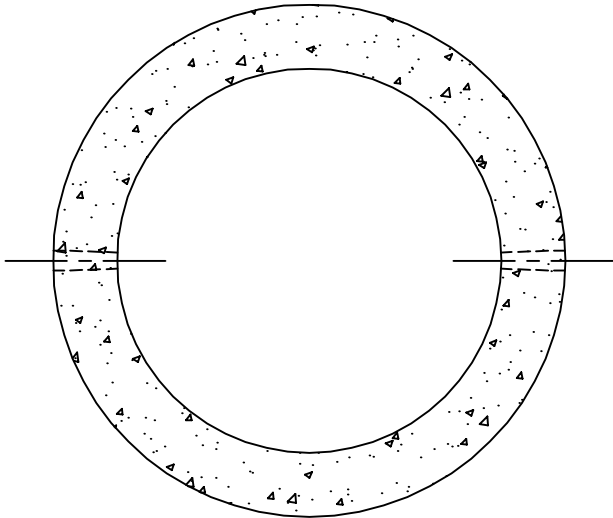
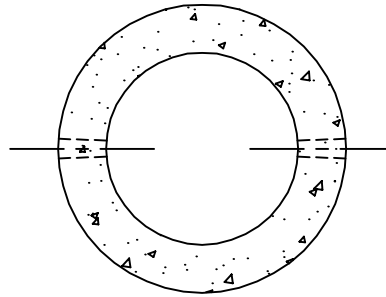


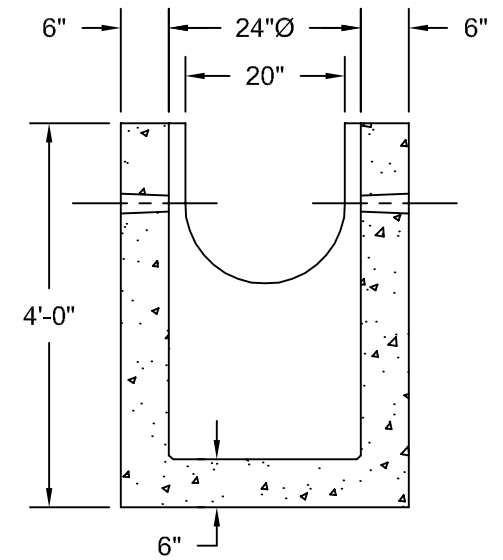
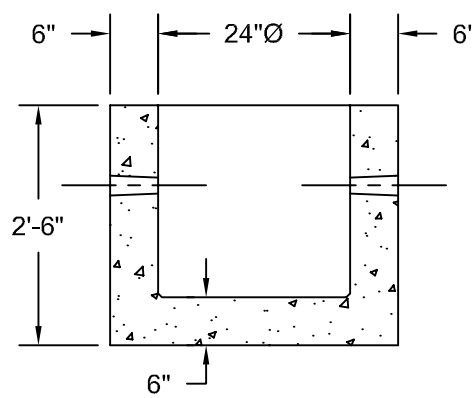
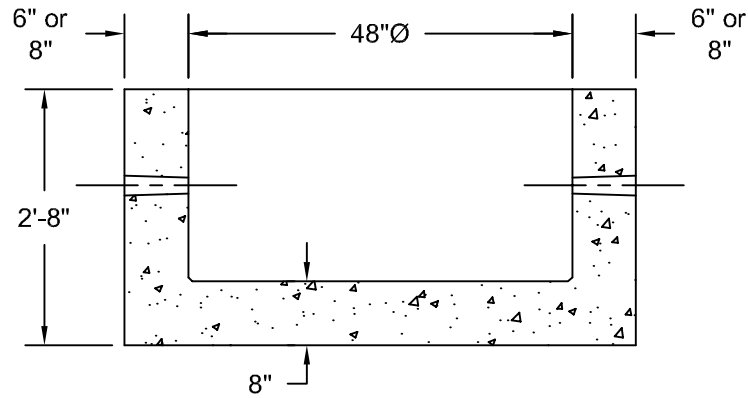
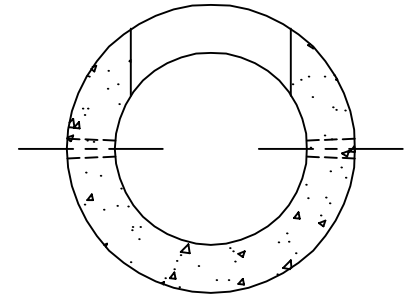
48" x 2'-8" Heavy Wall Sump



24" x 2'-6" Heavy Wall Sump

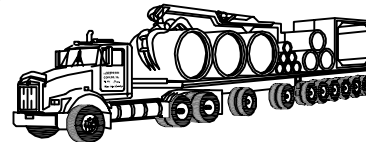


24" x 4'-0" Heavy Wall Catch Basin



Note:

Precast Heavy Wall Structures Are Manufactured To MDOT Standard Detail I-5C And Meet ASTM C-478 Specifications.



Northern Concrete Pipe, Inc.

401 Kelton Street 5281 Lansing Road
 Bay City, MI 48706 Charlotte, MI 48813
 1 800 222 9918 1 800 874 9701

24"Ø & 48"Ø Precast Concrete Heavy Wall Sumps

Date 22 Sep 98	Revised	Drawn By BmG	Scale NTS	3.3
-------------------	---------	-----------------	--------------	------------