



EJIW #1040-A PT Cover Shall Have The Lettering "MDOT MITS SCANDI" Cast Onto The Top Surface.

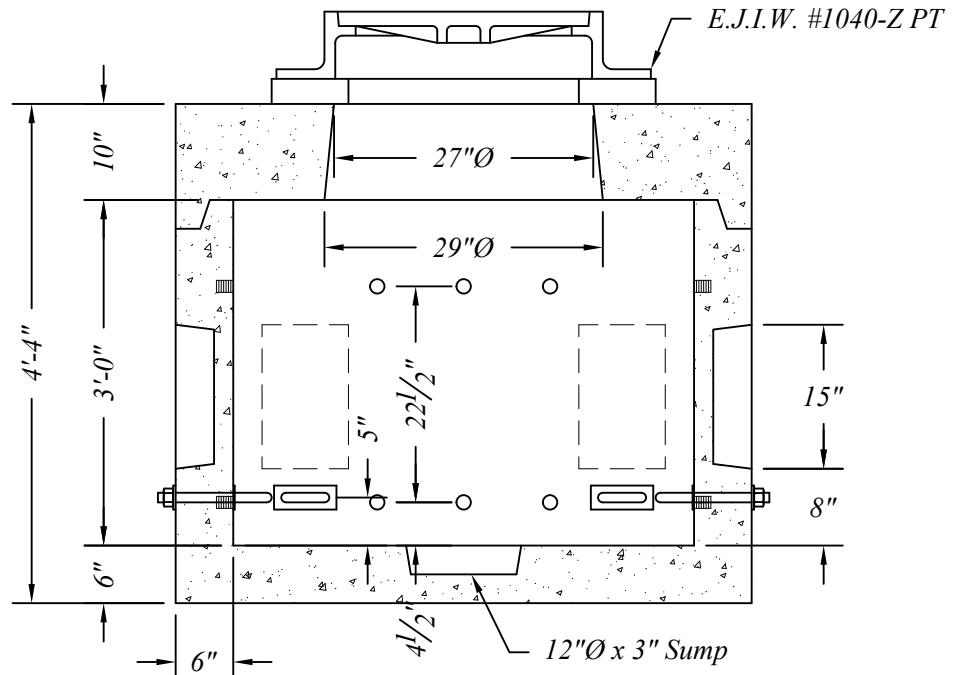
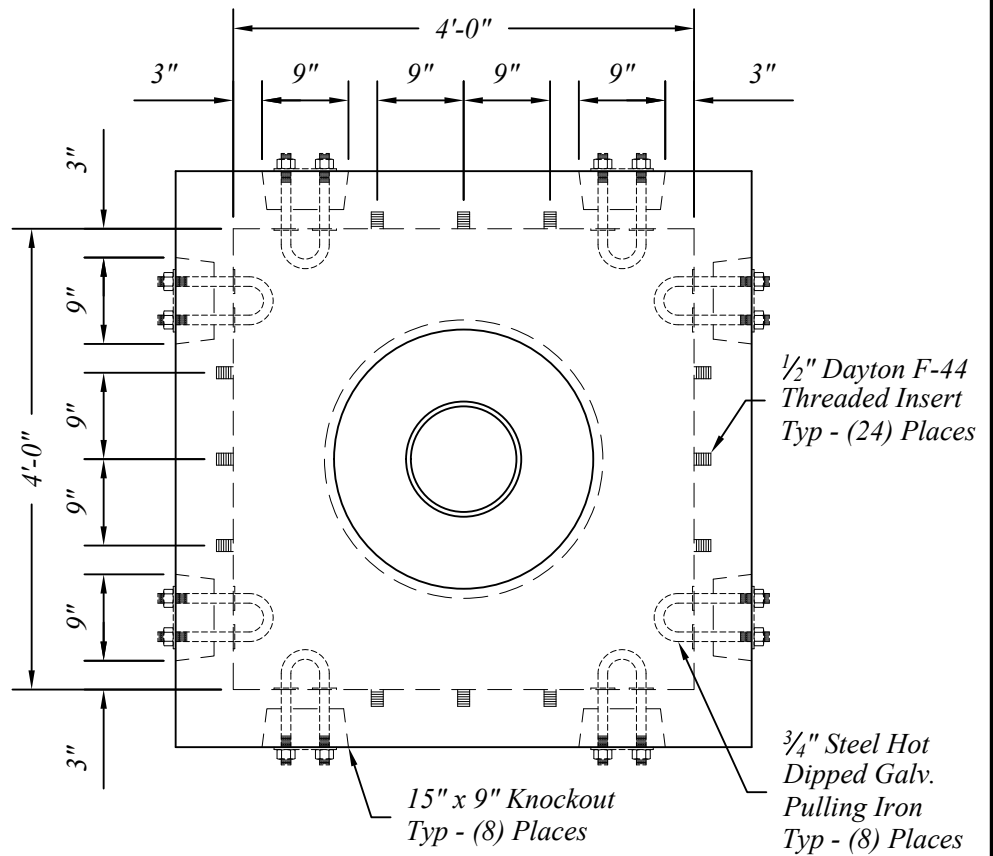
Precast Handhole Base Will Weigh Approximately 5,925 Lbs.

Precast Handhole Cover Will Weigh Approximately 2,600 Lbs.

Precast Handhole To Be Manufactured To ASTM C-478 Specifications w/HS-20 Loading.

Concrete Strength: 4500 psi @ 28 days

Hanholes To Be Manufactured w/Vibrated Concrete Reinforced With A Combination of Welded Wire Fabric and Rebar as Required.



Typical 4' x 4' x 3'-0" Precast Concrete MDOT MITS Handhole



401 Kelton St Bay City, MI 48706

5281 Lansing Rd
Charlotte, MI 48813

4950 White Lake Rd
Clarkston, MI 48346

2701 Chicago Dr SW
Wyoming, MI 49519

3756 Centennial Rd
Sylvania, OH 43560

Date
15 May 15

Drawn By
BmG

Scale
NTS

08.13