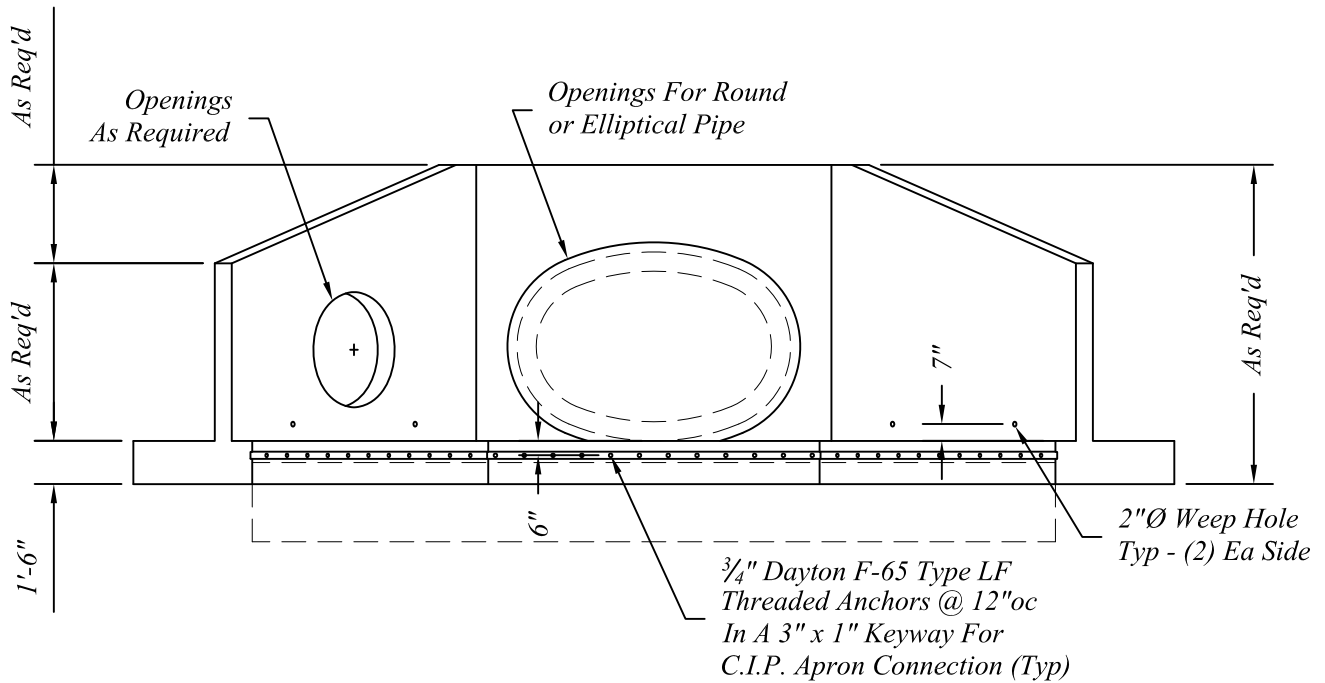
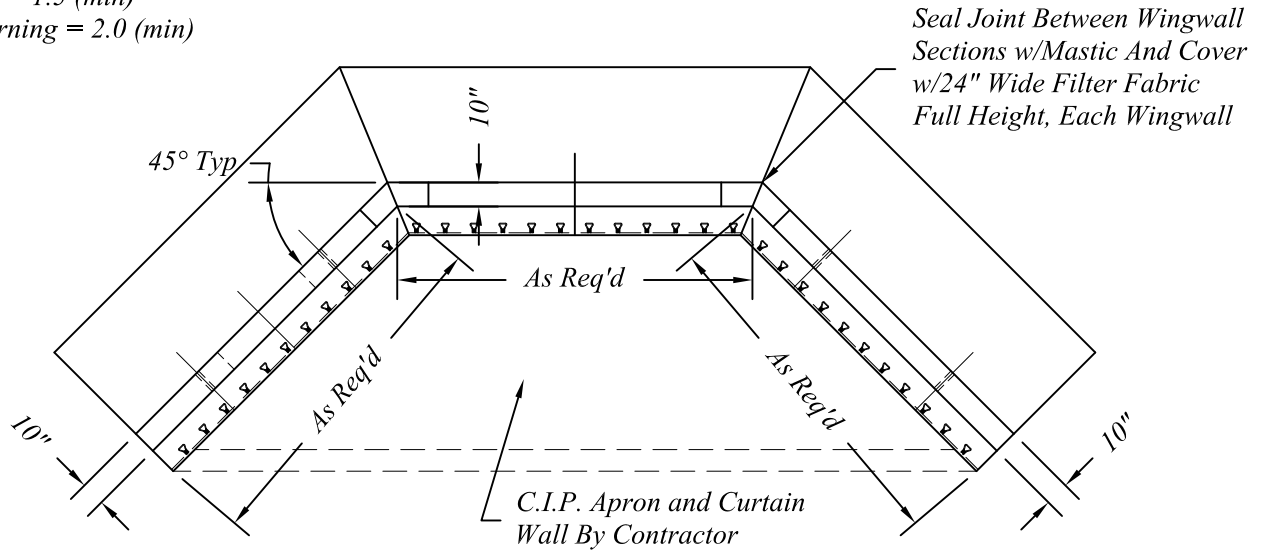


Design Assumptions:

1. Soil Friction Angle = 30°, Unit Weight = 120pcf
2. Max Allowable Soil Bearing = 3000psf
3. Bar Cover = 1½" U.N.O.
4. f'c @ 28 Days = 5000psi (min)
5. Reinforcement = ASTM A-615, Grade 60
6. Materials & Manufacturing In Accordance With ASTM C-913 Specifications.
7. Safety Factors:
  - Sliding = 1.5 (min)
  - Overturning = 2.0 (min)



*Precast Concrete Headwall / Wingwall For RCP & ERCP*



401 Kelton Street  
 Bay City, MI 48706  
 1 800 222 9918

5281 Lansing Road  
 Charlotte, MI 48813  
 1 800 874 9701

Date	01 Nov 11
Drawn By	BmG
Scale	NTS

*The Engineer For This Project To Verify The Design Assumptions Are Adequate For This Specific Site.*