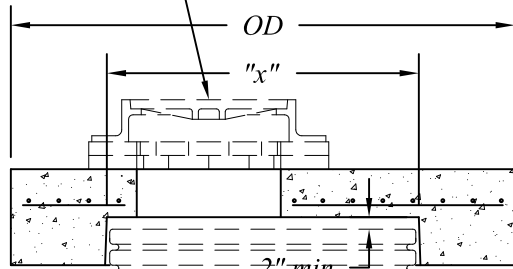
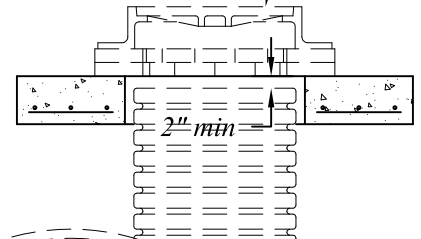


*Casting & Adjustment
To Finish Grade
By Contractor*



*Casting & Adjustment
To Finish Grade
By Contractor*



*CSP or CPE
Riser Pipe*

*Detention System
w/Riser > 24"Ø*

*Detention System
w/Riser = 24"Ø*

*CSP or CPE
Mainline*

*Access Manhole Cover To Be Manufactured To ASTM C-478 Specifications.
Concrete Strength 4000psi @ 28 days.
Reinforcement per ASTM A-615 & A-496 Specifications.*

NORTHERN CONCRETE PIPE



401 Kelton Street
Bay City, MI 48706
1 800 222 9918

5281 Lansing Road
Charlotte, MI 48813
1 800 874 9701

Proposed - Detention System Access Manhole Cover

Date
17 May 07

Revised
30 Nov 07

Rev. No.
1

Drawn By
BmG

Scale
NTS