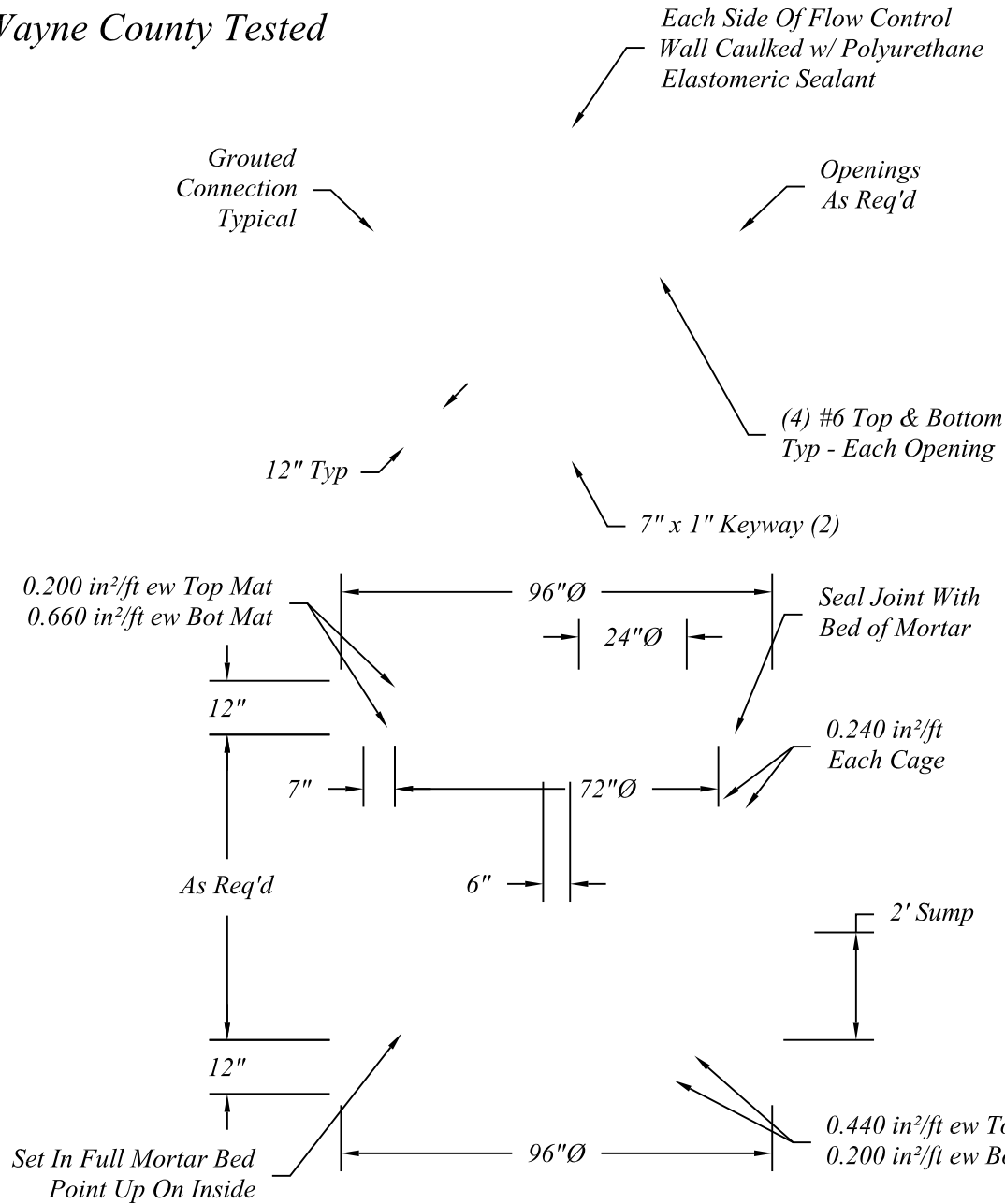


Wayne County Tested



rains Into A Pond, River or County Drain.

Manhole Sections To Be Manufactured To ASTM C-478 Specifications w/HS-25 Loading And In Accordance With Northern Concrete Pipe, Inc. (800 222 9918).

Reinforcing Shown For Schematic Only. All Steel Areas Are Minimums.

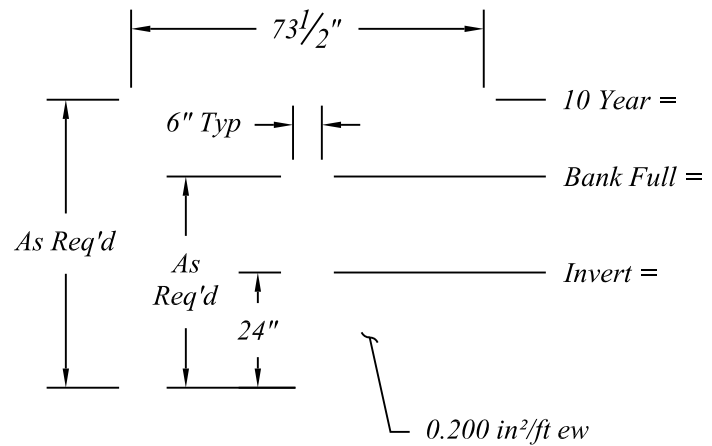
Contractor To Seal Between Precast Wall & Base w/Butyl Rope.

Inlet & Outlet Pipes Size Varies.

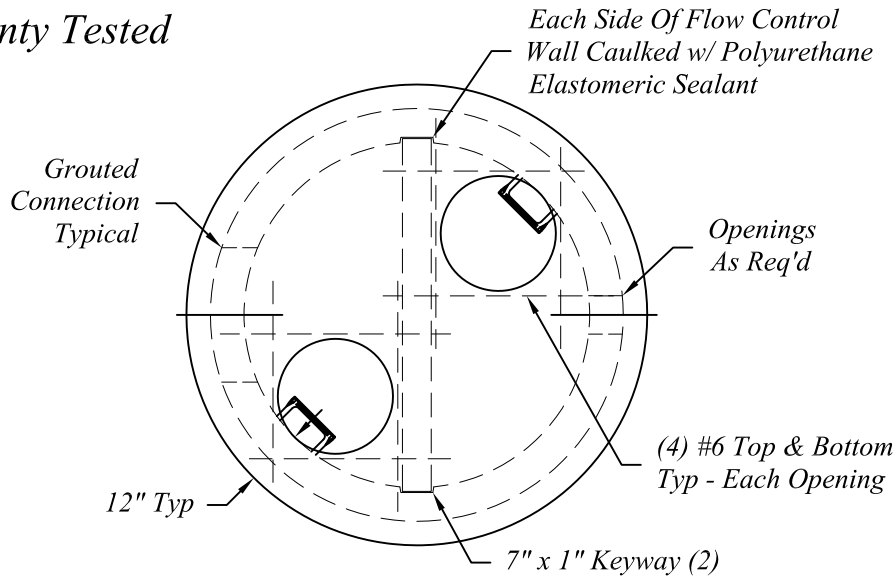
Maximum 2 - 24"Ø Pipes or Equivalent On The Same Plane.

Number, Size and Elevation of Holes In The Flow Restrictor Wall Shall Be In Accordance With The Current Storm Water Management Program.

Work This Sheet With Applicable Notes On S-1.



Wayne County Tested



Baffle Wall Will Extend To The Top If Storm Water Drains Into City Storm Sewer.

Manhole Sections To Be Manufactured To ASTM C-478 Specifications w/HS-25 Loading And In Accordance With Northern Concrete Pipe, Inc. (800 222 9918).

Reinforcing Shown For Schematic Only. All Steel Areas Are Minimums.

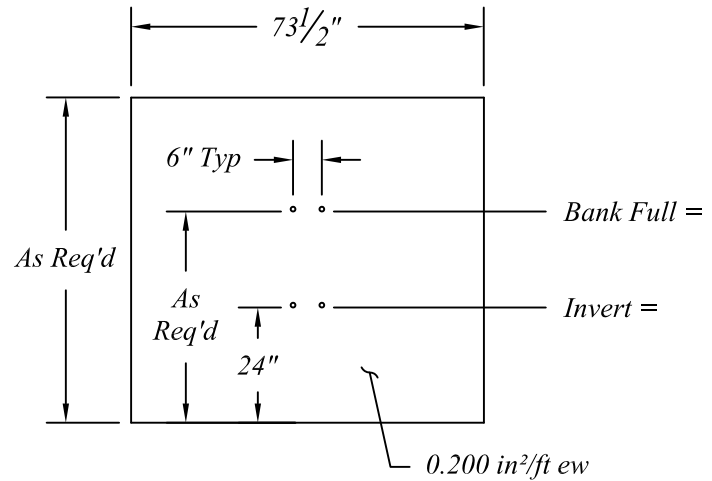
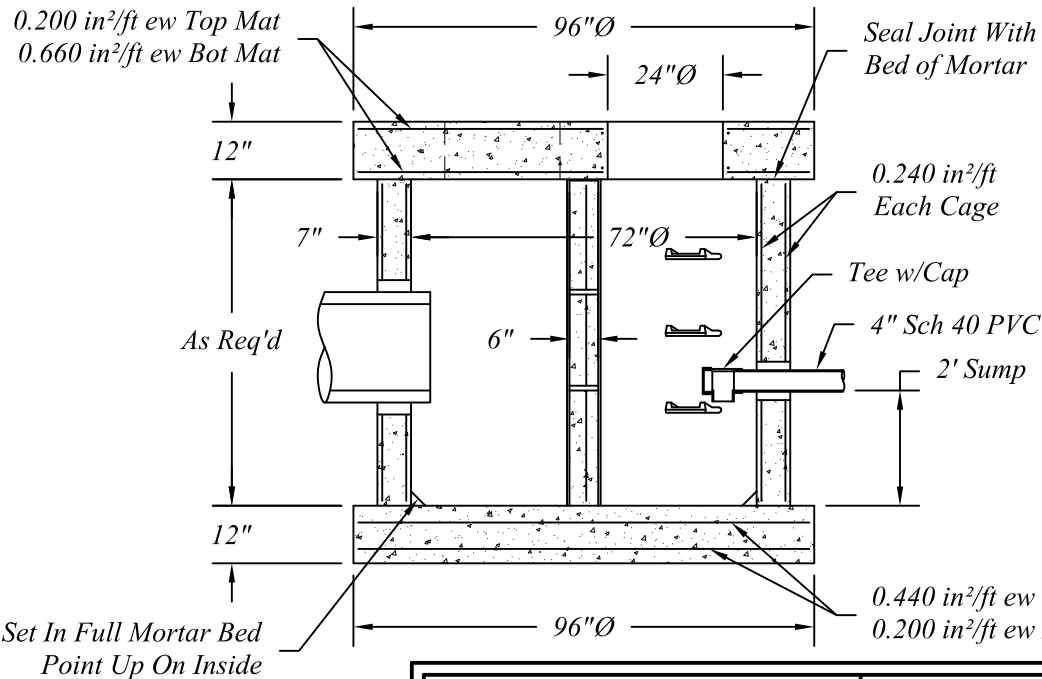
Contractor To Seal Between Precast Wall & Base w/Butyl Rope.


Inlet & Outlet Pipes Size Varies.

Maximum 2 - 24"Ø Pipes or Equivalent On The Same Plane.

Number, Size and Elevation of Holes In The Flow Restrictor Wall Shall Be In Accordance With The Current Storm Water Management Program.

Work This Sheet With Applicable Notes On S-1.



| | | | | | | |
|---|--|---|---------|----------|-----------------|-----------------|
|  | 401 Kelton Street Bay City, MI 48706 1 800 222 9918 | 72"Ø Precast Outlet Control Structure w/o Overflow | | | | |
| | 5281 Lansing Road Charlotte, MI 48813 1 800 874 9701 | Date 29 Apr 08 | Revised | Rev. No. | Drawn By BmG | Scale 1 : 40 |