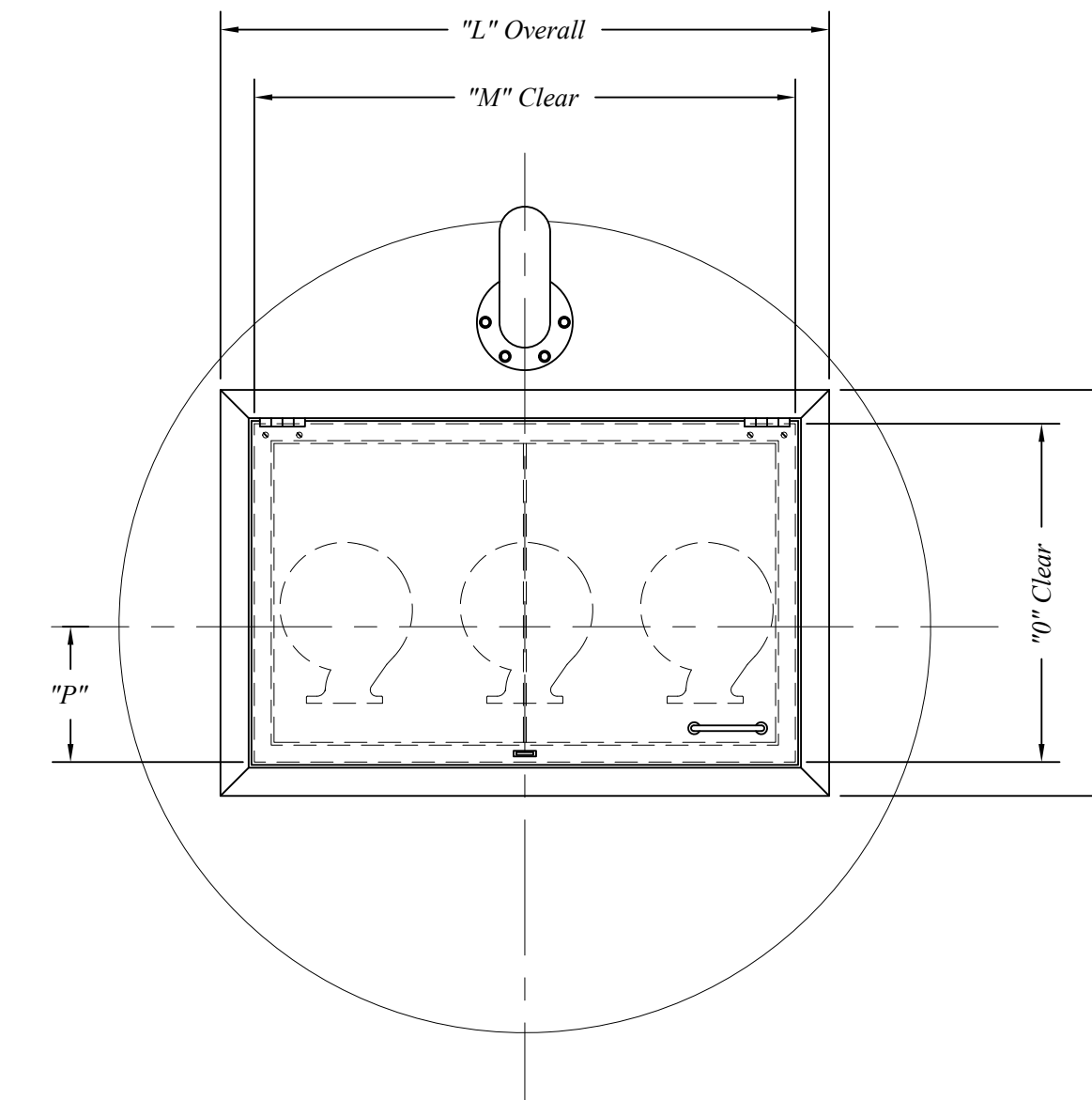
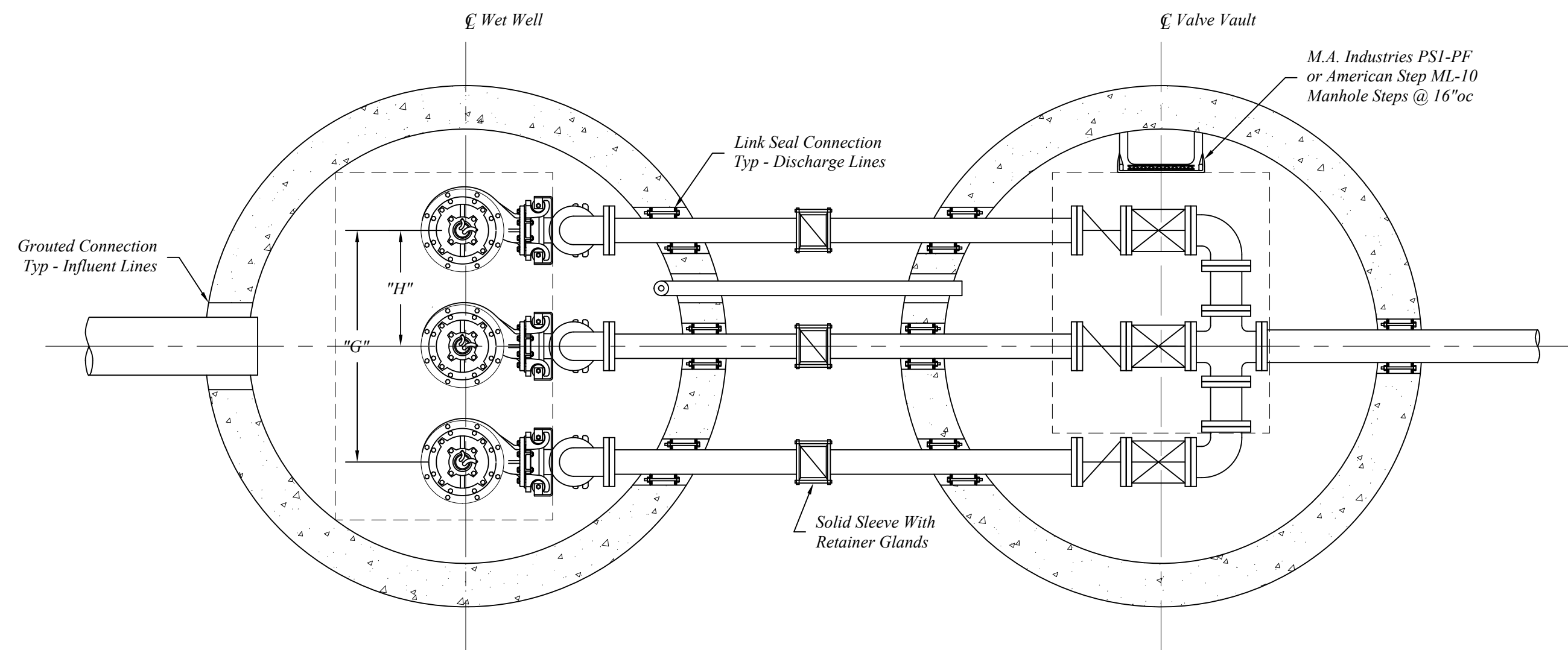
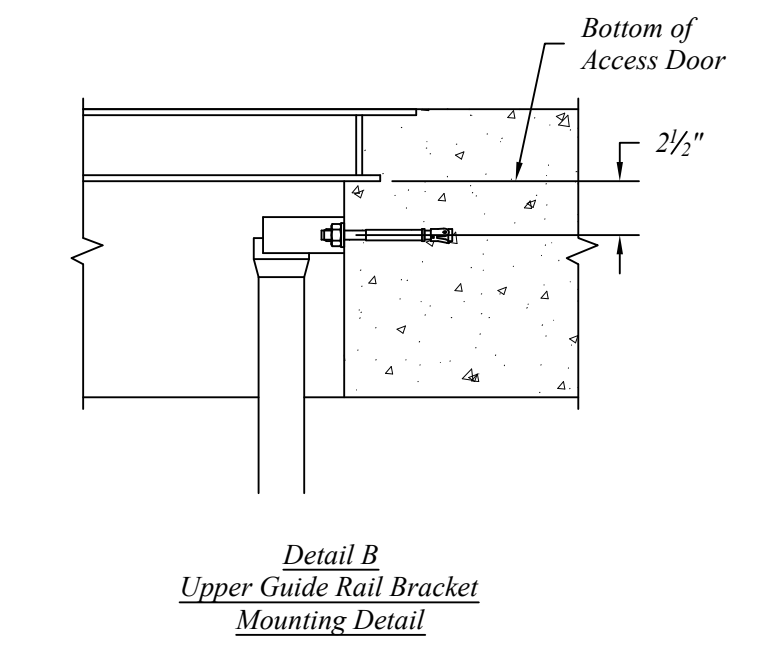
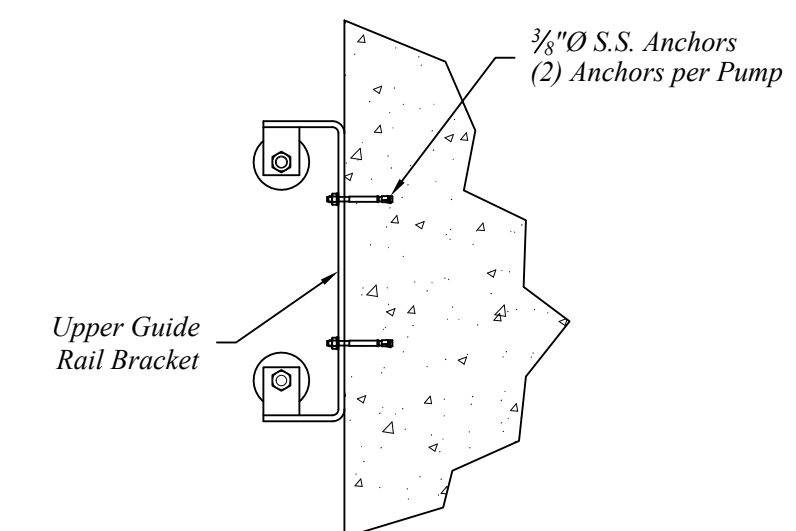
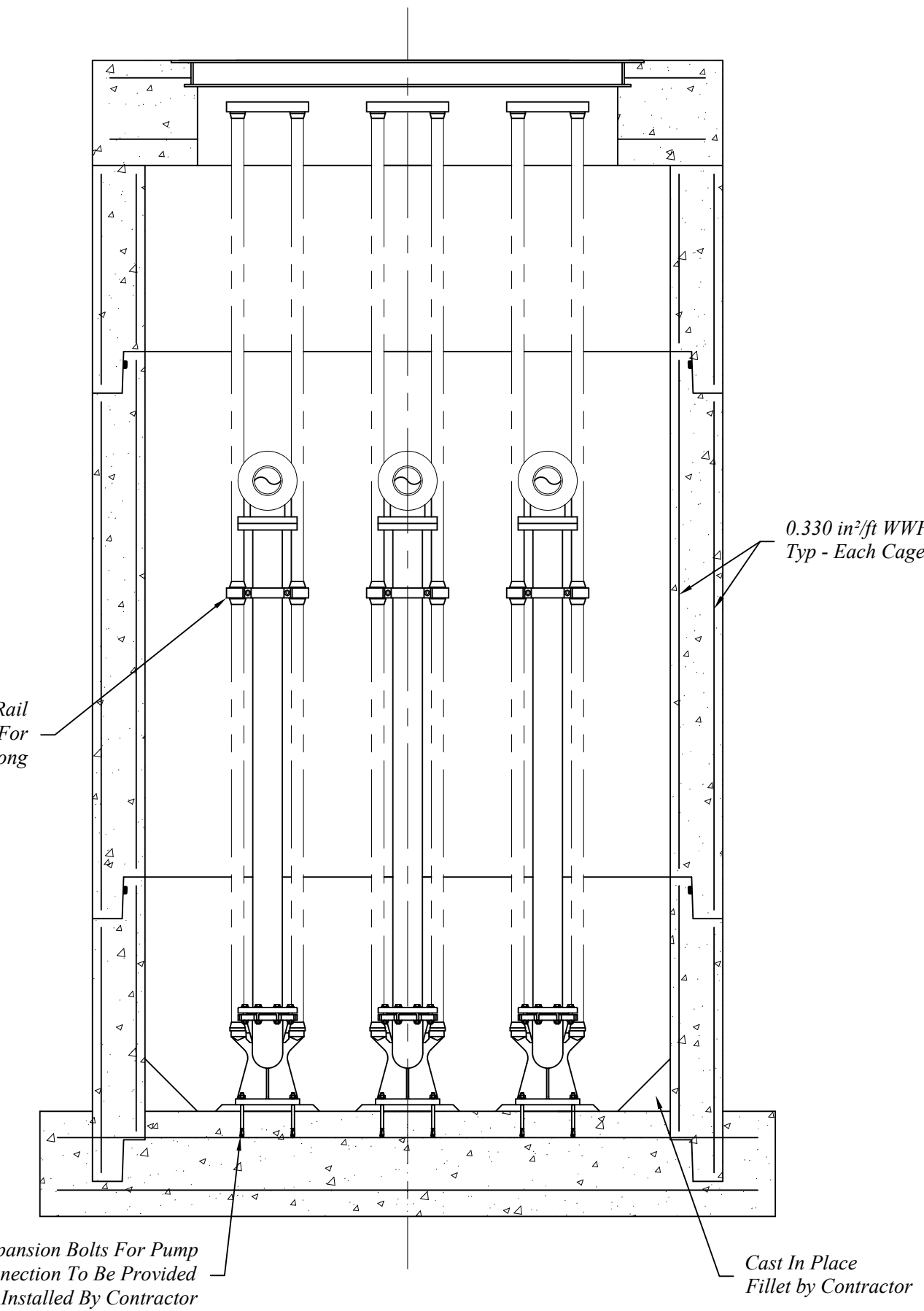
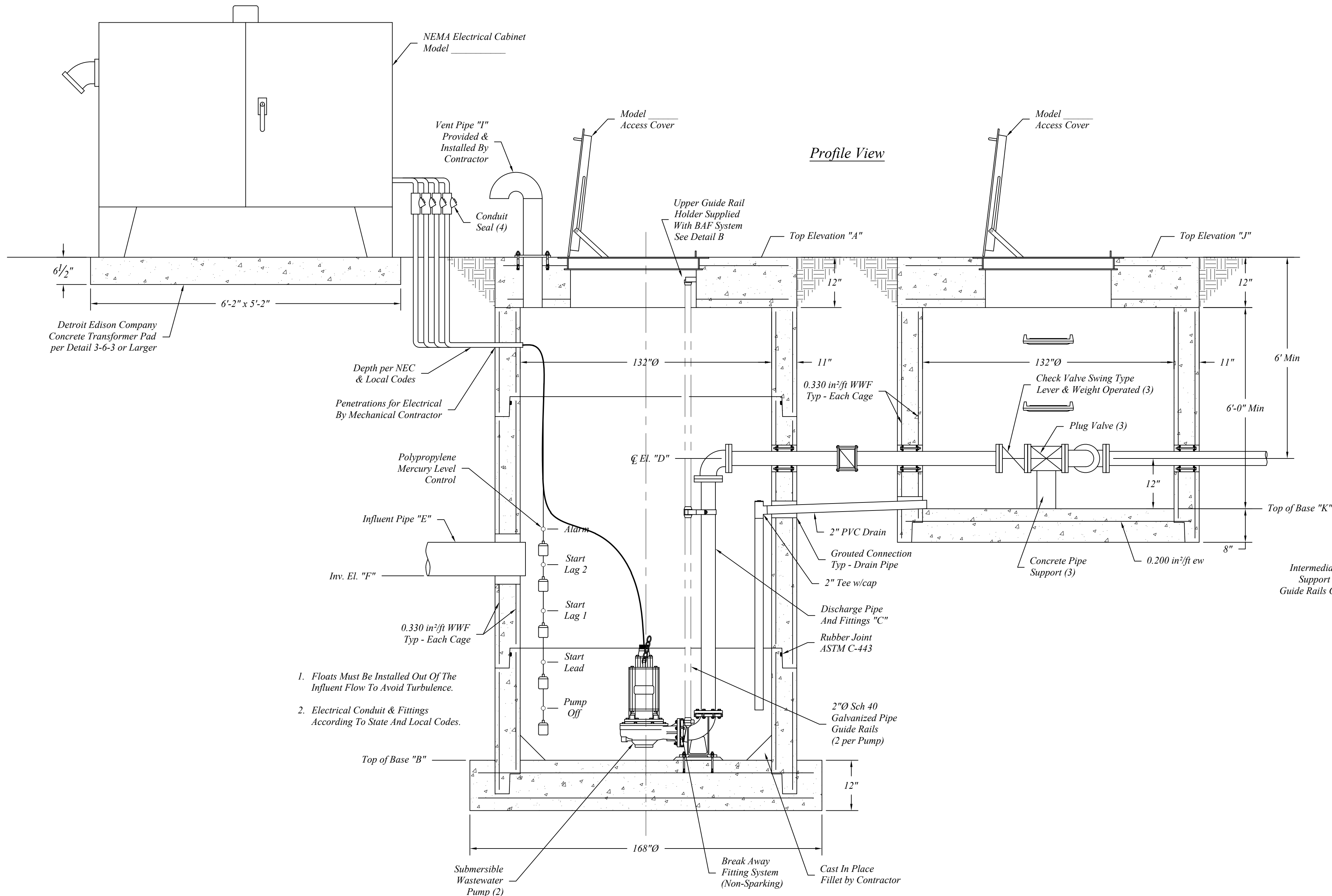


**Plan View**



**Profile View**



**Precast Notes:**  
 Pump Station Sections To Be Manufactured To ASTM C-478 Specifications w/HIS-20 Loading.  
 Manufactured as per Northern Concrete Pipe, Inc. (1.800.222.9918) or approved equal.  
 Concrete: 4000 psi @ 28 Days.  
 Reinforcement per ASTM A-615 & A-496.

Wet Well Dimensions	
A	Top of Cover Elevation
B	Top of Base Elevation
C	Discharge Pipe Diameter
D	Discharge Pipe $\bar{C}$ Elevation
E	Influent Pipe Diameter
F	Influent Pipe Inv. Elevation
G	Discharge Line Spacing
H	Discharge Line Offset
I	Vent Pipe Diameter
	Wet Well Cover Reinforcing # Bars @ " oc, ew
	Wet Well Base Reinforcing # Bars @ " oc, ew
Valve Vault Dimensions	
J	Top of Cover Elevation
K	Top of Base Elevation
	Valve Vault Cover Reinforcing # Bars @ " oc, ew
Wet Well Access Hatch Dimensions	
L	Access Hatch Overall Length
M	Access Hatch Clear Length
N	Access Hatch Overall Width
O	Access Hatch Clear Width
P	Access Hatch Offset
Pump Specifications	
	Pump Model Number
	Gallons per Minute (GPM)
	Total Dynamic Head (TDH)
	Horse Power (HP)
	Phase
	Voltage (V)
	Alarm Elevation
	Lag Pump 2 Elevation
	Lag Pump 1 Elevation
	Lead Pump Elevation
	Pump Off Elevation

- Floats Must Be Installed Out Of The Influent Flow To Avoid Turbulence.
- Electrical Conduit & Fittings According To State And Local Codes.