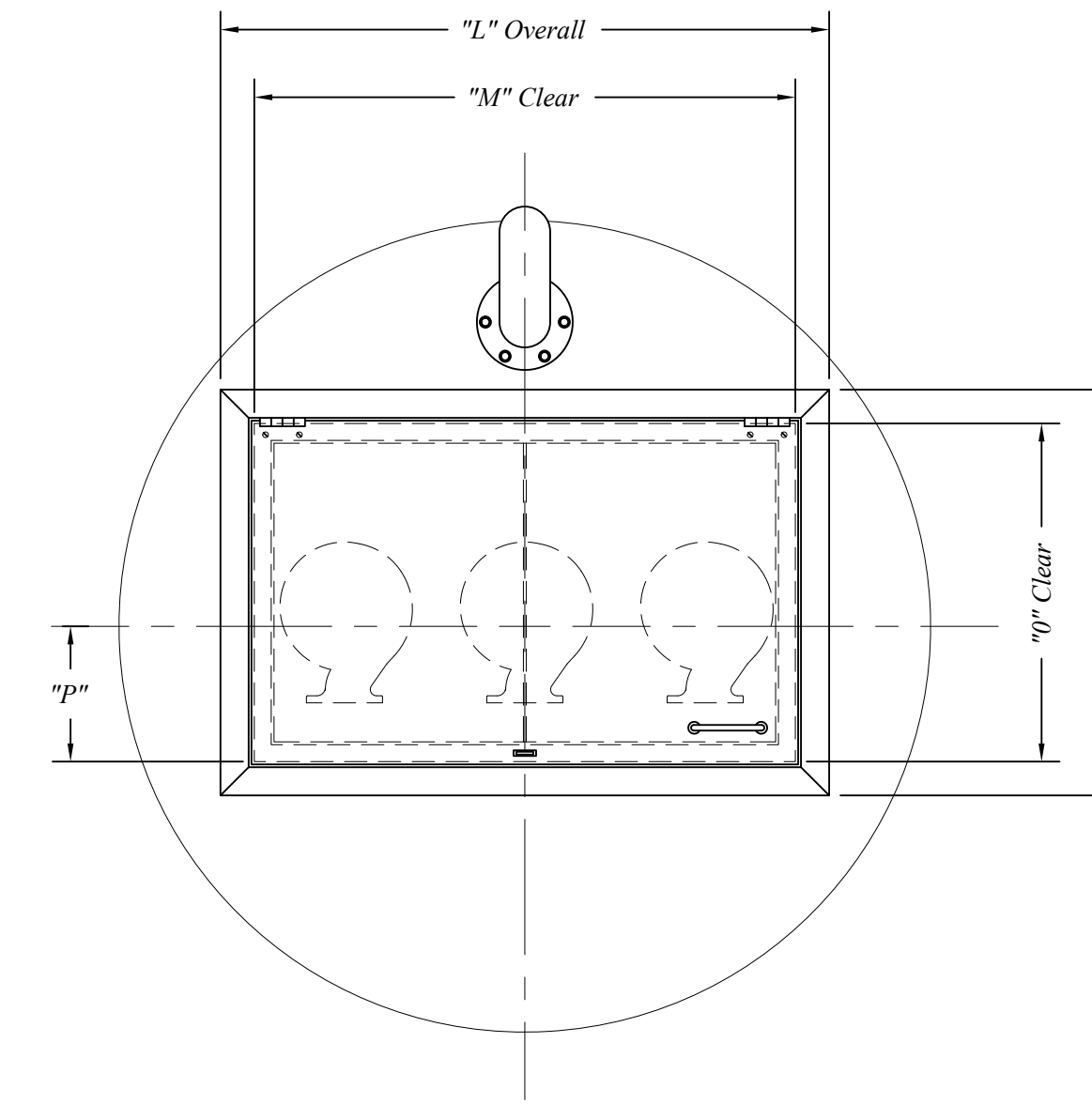
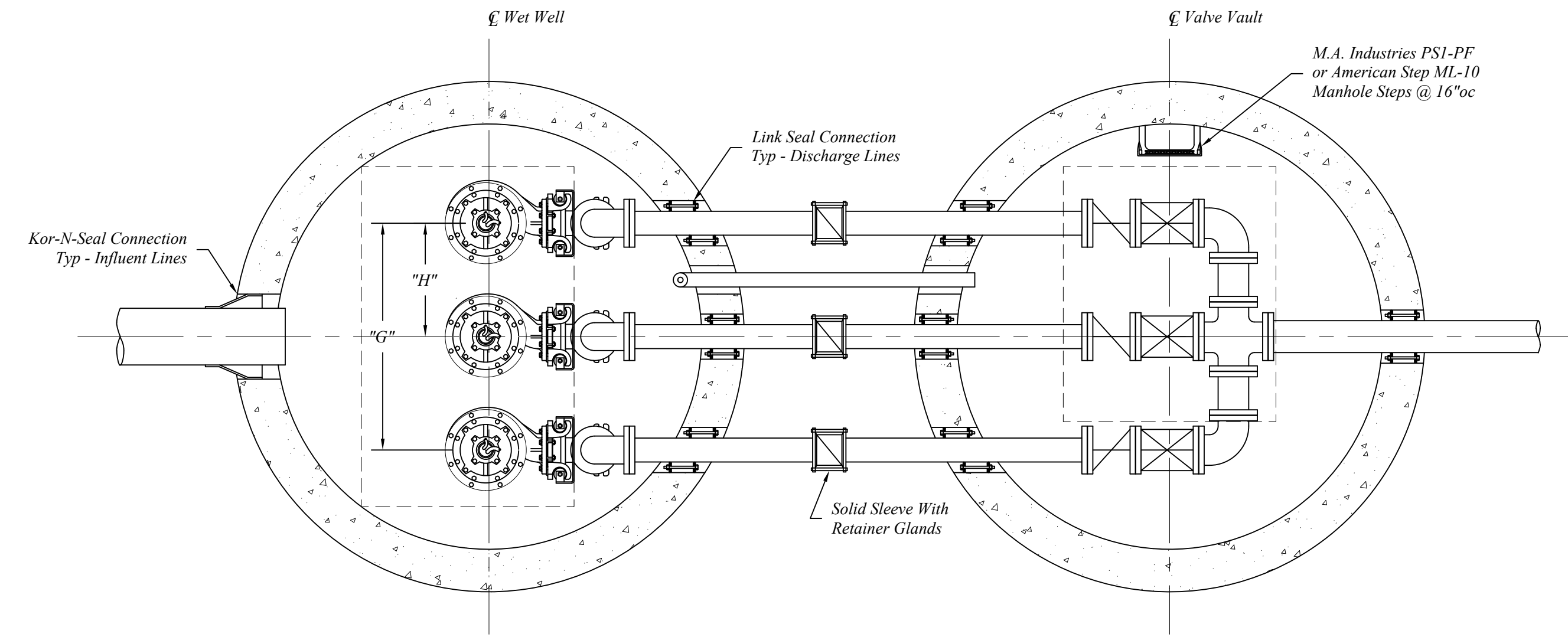
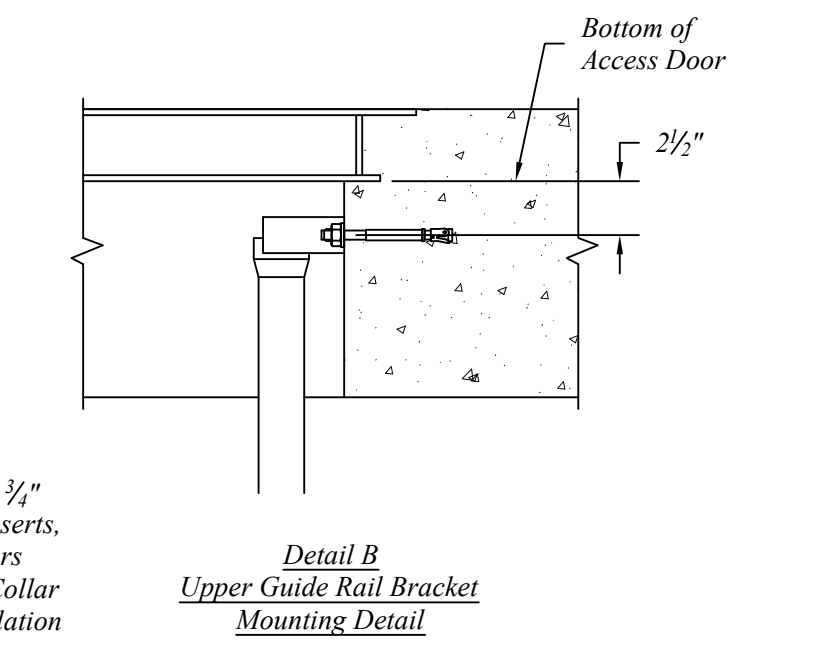
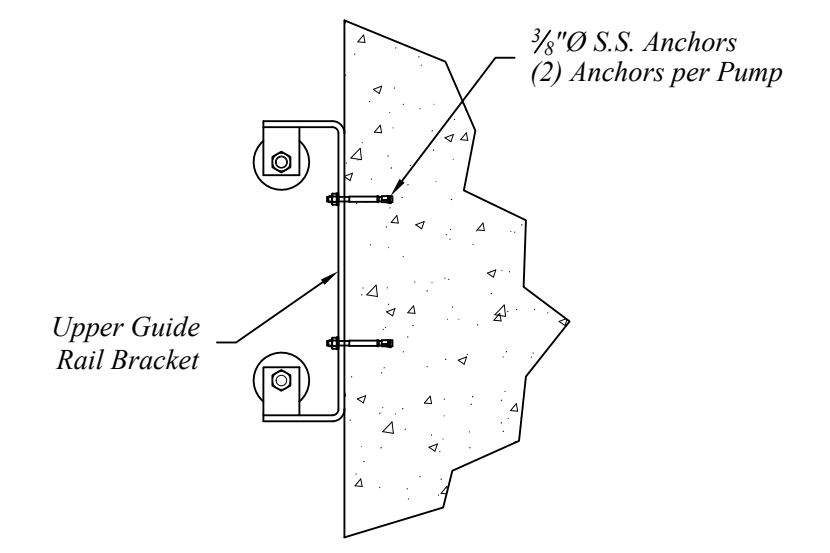
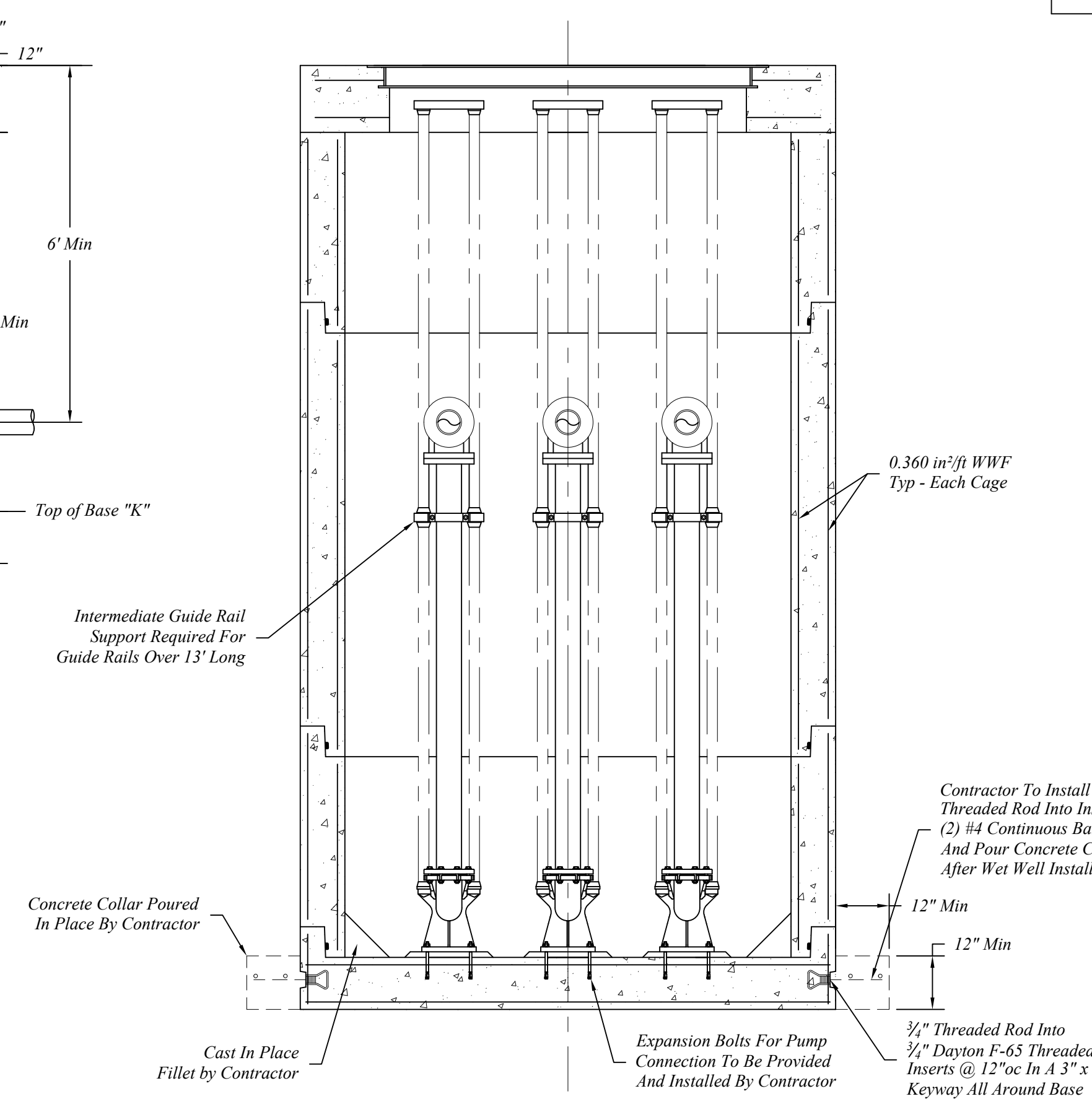
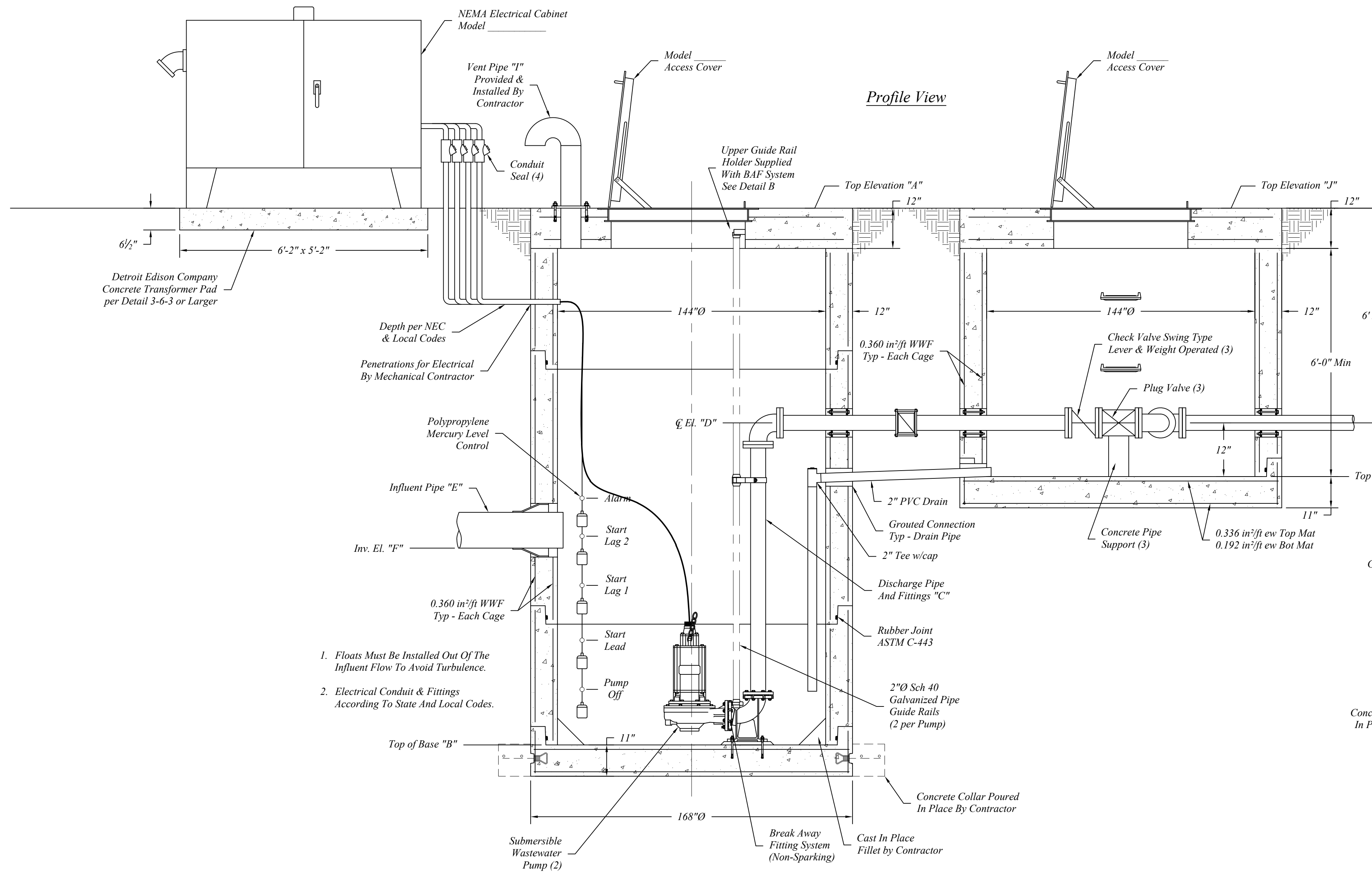


Plan View



Profile View



Precast Notes:
 Pump Station Sections To Be Manufactured To ASTM C-478 Specifications w/HIS-20 Loading.
 Manufactured as per Northern Concrete Pipe, Inc. (1.800.222.9918) or approved equal.
 Concrete: 4000 psi @ 28 Days.
 Reinforcement per ASTM A-615 & A-496.

Wet Well Dimensions		
A	Top of Cover Elevation	
B	Top of Base Elevation	
C	Discharge Pipe Diameter	
D	Discharge Pipe ϕ Elevation	
E	Influent Pipe Diameter	
F	Influent Pipe Inv. Elevation	
G	Discharge Line Spacing	
H	Discharge Line Offset	
I	Vent Pipe Diameter	
Wet Well Cover Reinforcing # Bars @ " oc, ew		
Wet Well Base Reinforcing # Bars @ " oc, ew		
Valve Vault Dimensions		
J	Top of Cover Elevation	
K	Top of Base Elevation	
Valve Vault Cover Reinforcing # Bars @ " oc, ew		
Wet Well Access Hatch Dimensions		
L	Access Hatch Overall Length	
M	Access Hatch Clear Length	
N	Access Hatch Overall Width	
O	Access Hatch Clear Width	
P	Access Hatch Offset	
Pump Specifications		
Pump Model Number		
Gallons per Minute (GPM)		
Total Dynamic Head (TDH)		
Horse Power (HP)		
Phase		
Voltage (V)		
Alarm Elevation		
Lag Pump 2 Elevation		
Lag Pump 1 Elevation		
Lead Pump Elevation		
Pump Off Elevation		