



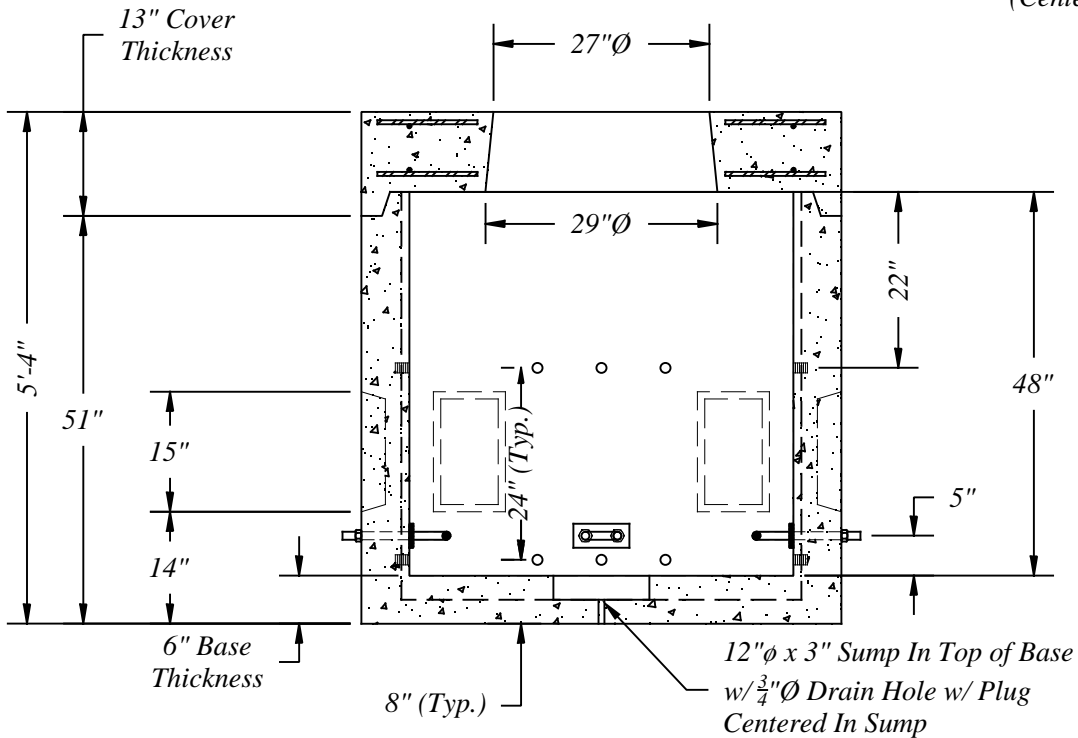
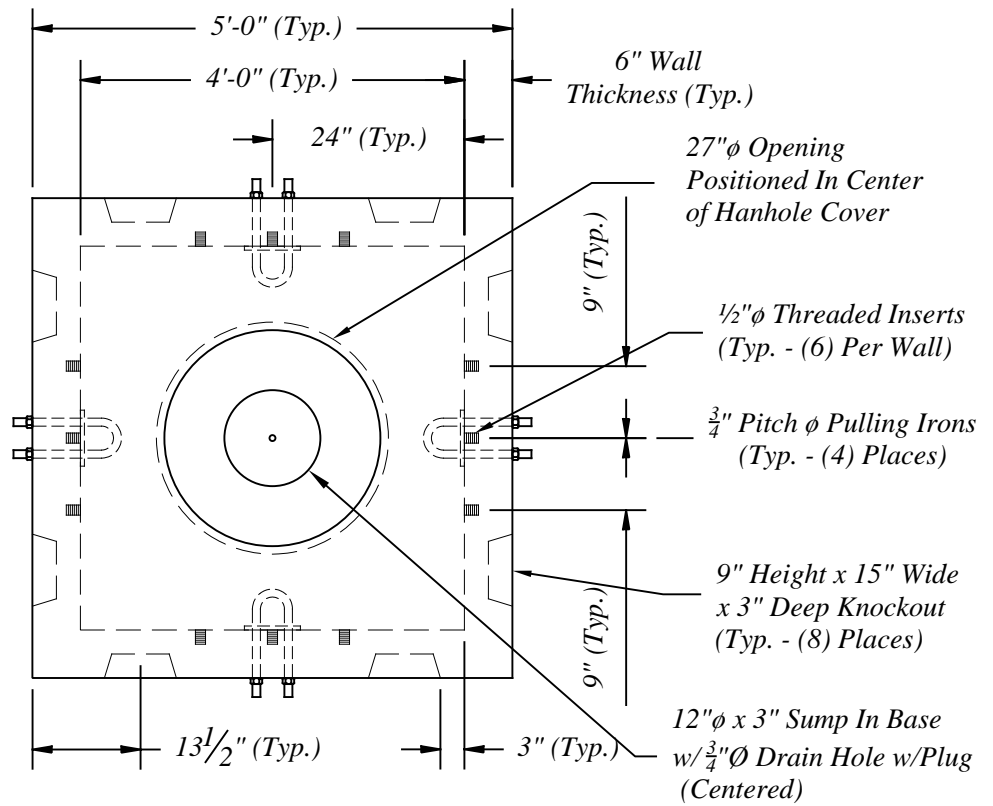
Precast Handhole Heaviest Lift  
Approximately 7,280 Lbs.

Precast Handhole To Be  
Manufactured To ASTM C-478  
Specifications w/HS-25 Loading.

Concrete Strength: 5000 psi @  
28 days.

MDOT Grade S2 Concrete In  
Accordance w/Section 701.

Reinforcing Per ASTM A-185 or  
A-497 For WWF & ASTM A-615  
Grade 60 for Rebar.



NORTHERN CONCRETE PIPE



401 Kelton St Bay City, MI 48706

5281 Lansing Rd  
Charlotte, MI 48813

4950 White Lake Rd  
Clarkston, MI 48346

2701 Chicago Dr SW  
Wyoming, MI 49519

3756 Centennial Rd  
Sylvania, OH 43560

Proposed - 4' x 4' Extended Precast Electrical Handhole

Date  
27 May 15

Revised  
10 May 18

Rev. No.

Drawn By  
JpB

Scale  
 $\frac{1}{2}$ " = 1'