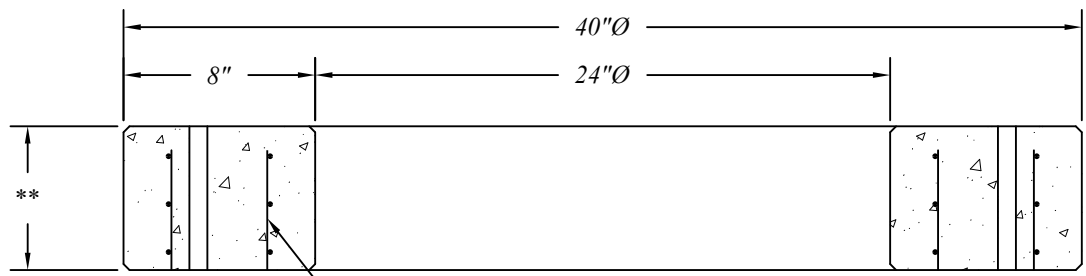


3/4"Ø Hole Thru Adjusting Ring
For Bolt Down Type Castings
Typ - 4 Places Equally Spaced



0.240 in²/L.F. Welded
Wire Fabric Mesh
Inner & Outer Cage

Precast Adjusting Rings Manufactured To
ASTM C-478 Specifications.

Adjusting Rings Are Available In 2", 3", 4" &
6" Heights.

Reinforcing Shown For Schematic Only.

Standard Precast Concrete Adjusting Rings			
	401 Kelton St Bay City, MI 48706		Date 12 May 16
	5281 Lansing Rd Charlotte, MI 48813	2701 Chicago Dr SW Wyoming, MI 49519	Drawn By BmG
	4950 White Lake Rd Clarkston, MI 48346	3756 Centennial Rd Sylvania, OH 43560	Scale NTS
			02.30