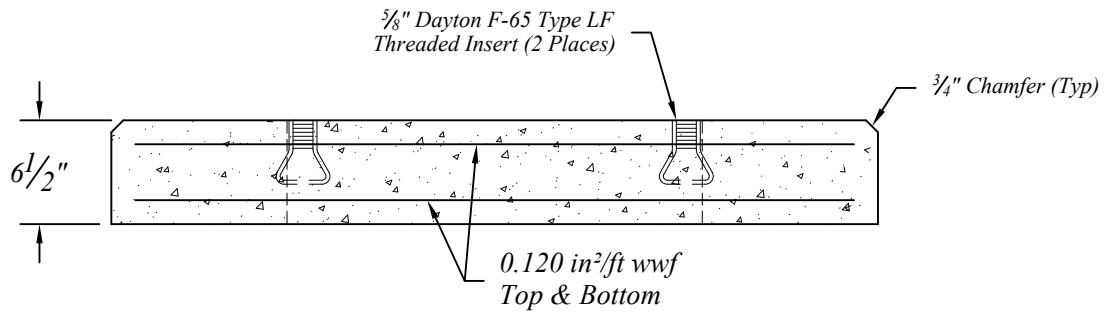
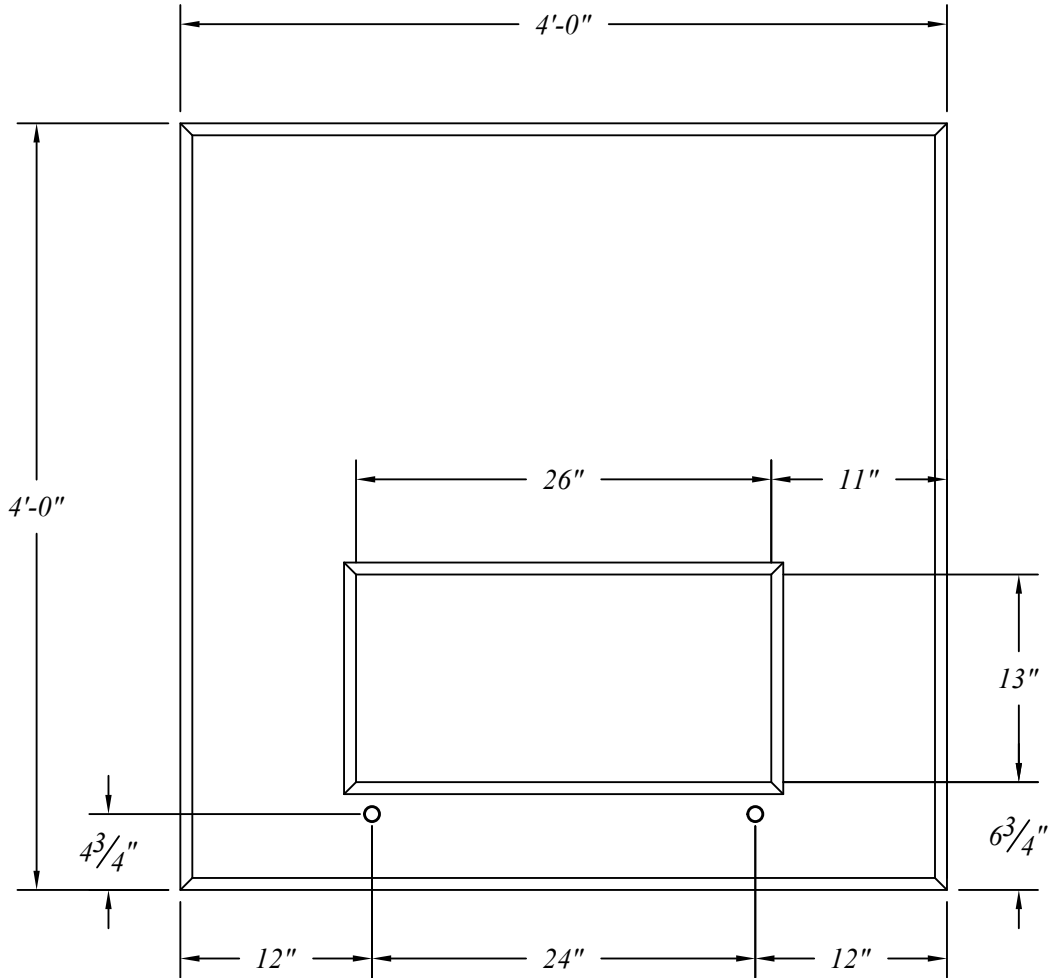


Pad For 25 Thru 250 KVA SØ 7620V Transformer Including  
Mini Pad, 4800V Non-Switching and SØ ISO Pad



4'-0" x 4'-0" Precast Concrete Detroit Edison Transformer Pad

Concrete Strength: 3500 psi @ 28 days  
Steel Reinforcing: ASTM A-185/A-497,  
Grade 65  
Steel Cover: 1 1/2" Minimum



401 Kelton St Bay City, MI 48706  
5281 Lansing Rd Charlotte, MI 48813  
4950 White Lake Rd Clarkston, MI 48346

2701 Chicago Dr SW Wyoming, MI 49519  
3756 Centennial Rd Sylvania, OH 43560

Date 30 Jun 15  
Drawn By BmG  
Scale NTS  
08.20