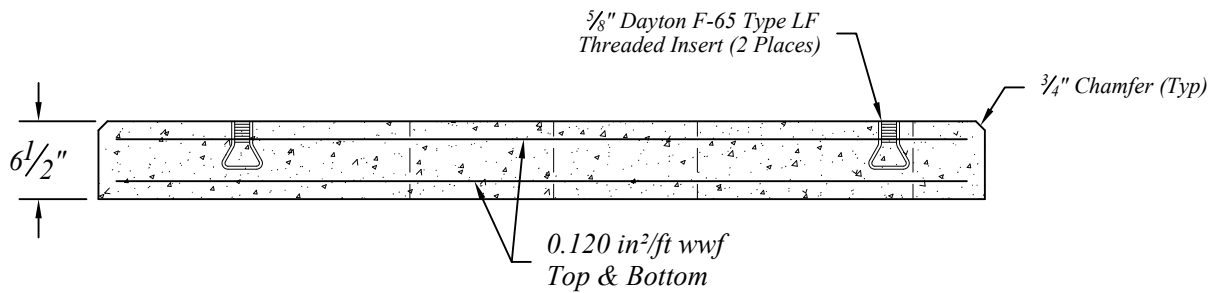
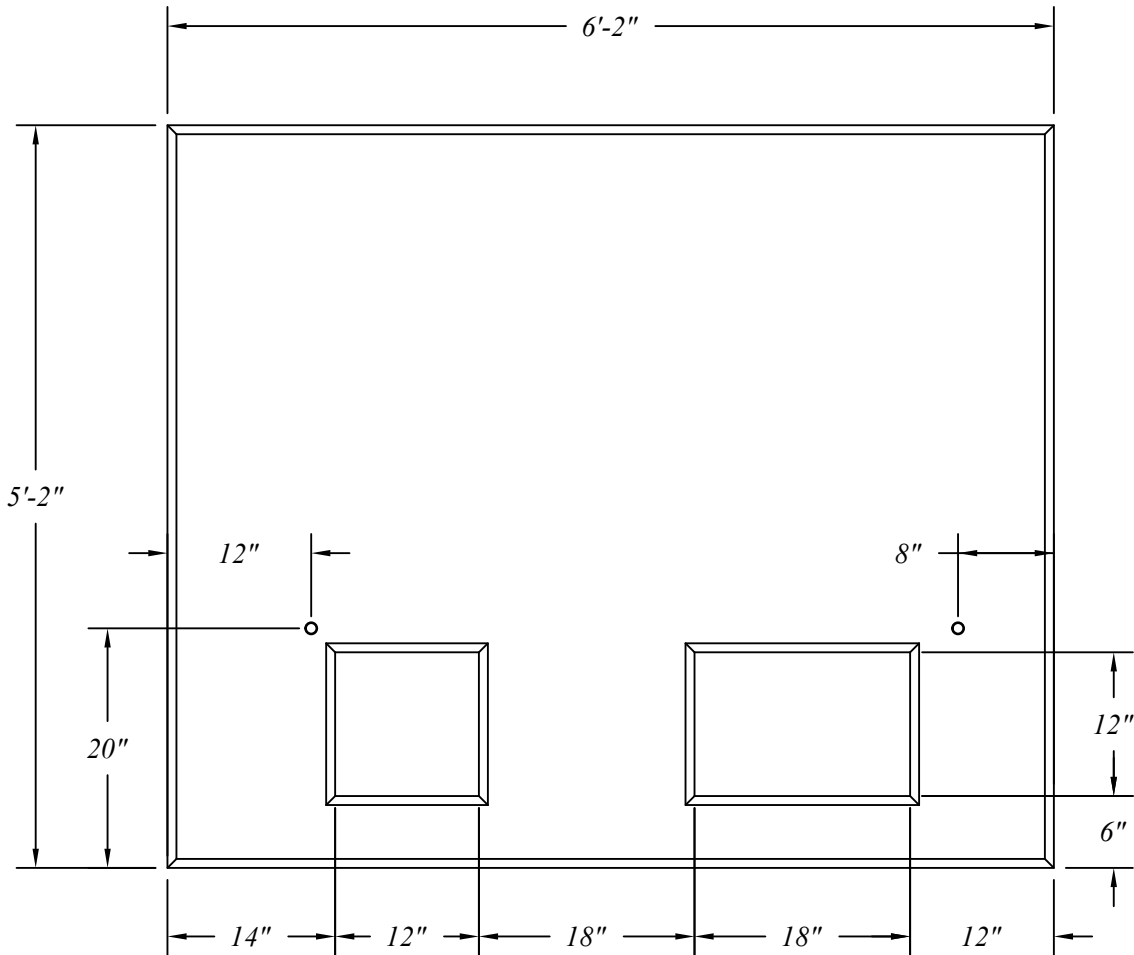


Pad For All Duplex Switching Up Thru 167 / 100, 3Ø Non-Switching Transformers - 300 & 500 KVA,
and 3Ø Dead Front Transformer - 75 Thru 750 KVA Including All 3Ø Dead Front Duplex



5'-2" x 6'-2" Precast Concrete Detroit Edison Transformer Pad

Concrete Strength: 3500 psi @ 28 days
Steel Reinforcing: ASTM A-185/A-497,
Grade 65
Steel Cover: 1 1/2" Minimum



401 Kelton St Bay City, MI 48706

Date
15 May 15

5281 Lansing Rd
Charlotte, MI 48813

2701 Chicago Dr SW
Wyoming, MI 49519

Drawn By
BmG

4950 White Lake Rd
Clarkston, MI 48346

3756 Centennial Rd
Sylvania, OH 43560

Scale
NTS

08.22