



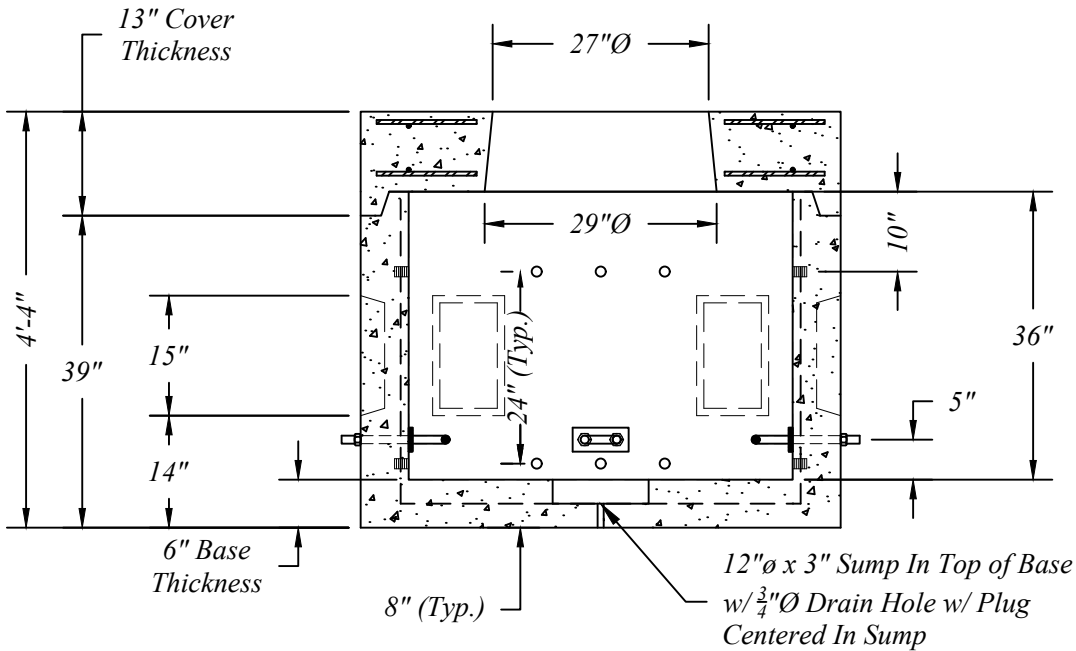
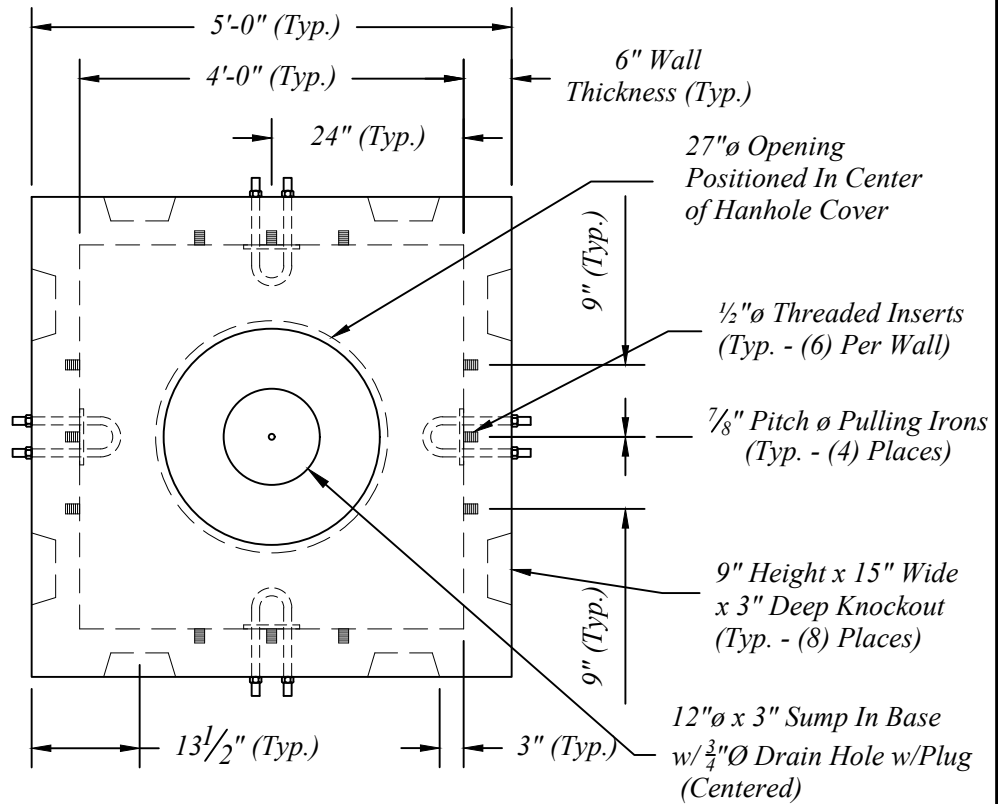
Precast Handhole Heaviest Lift
Approximately 5,925 Lbs.

Precast Handhole To Be
Manufactured To ASTM C-478
Specifications w/HS-25 Loading.

Concrete Strength: 5000 psi @
28 days.

MDOT Grade S2 Concrete In
Accordance w/Section 701.

Reinforcing Per ASTM A-185 or
A-497 For WWF & ASTM A-615
Grade 60 for Rebar.



401 Kelton St Bay City, MI 48706		Proposed Type D - 4' x 4' Precast Electrical Handhole			
5281 Lansing Rd Charlotte, MI 48813	2701 Chicago Dr SW Wyoming, MI 49519				
4950 White Lake Rd Clarkston, MI 48346	3756 Centennial Rd Sylvania, OH 43560	Date 27 May 15	Revised 10 May 18	Rev. No.	Drawn By JpB
				Scale 1/2" = 1'	