

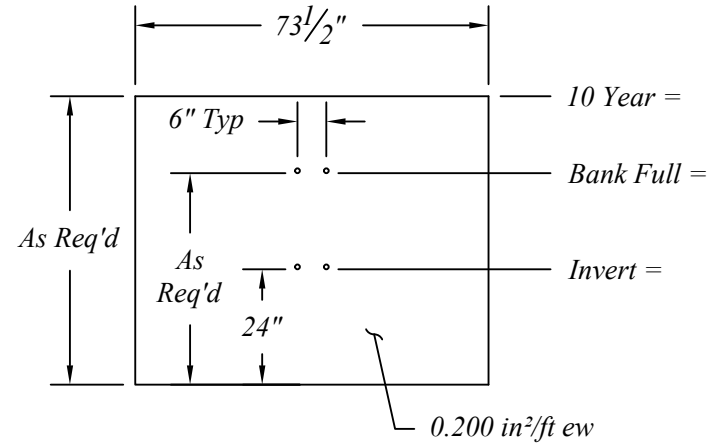
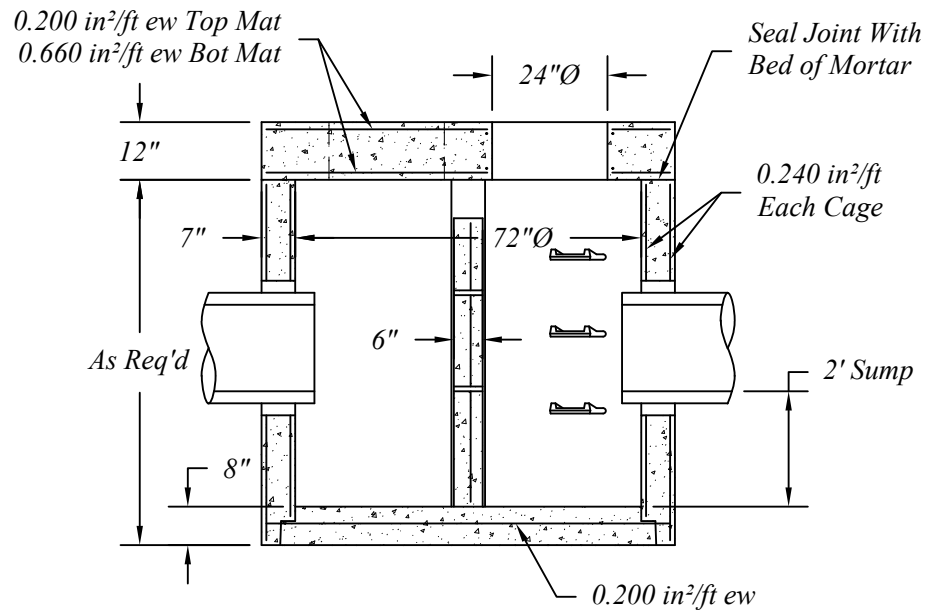
Manhole Sections To Be Manufactured To ASTM C-478 Specifications And In Accordance With Northern Concrete Pipe, Inc. (800 222 9918).

Reinforcing Shown For Schematic Only. All Steel Areas Are Minimums.

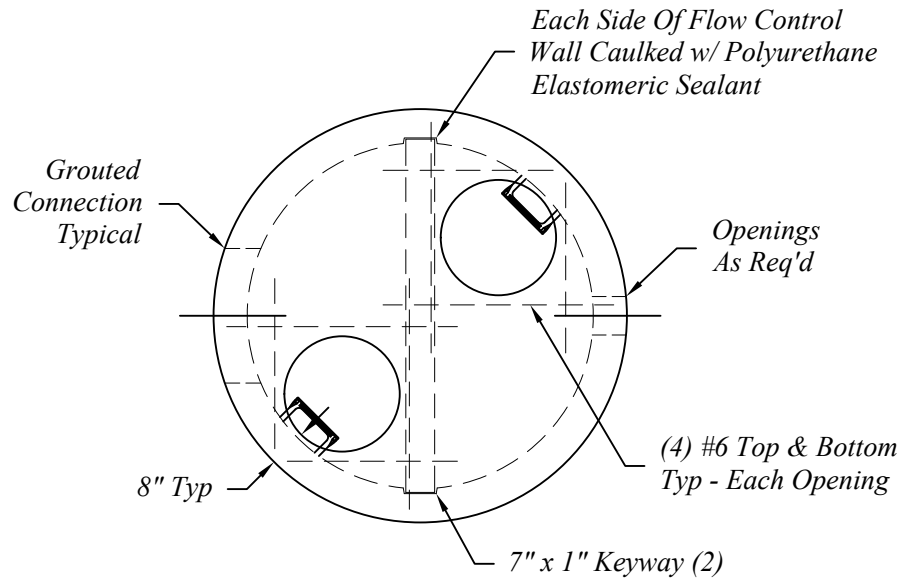
Contractor To Seal Between Precast Wall & Base w/Butyl Rope.

Inlet & Outlet Pipes Size Varies.

Number, Size and Elevation of Holes In The Flow Restrictor Wall Shall Be In Accordance With The Governing Agency.



	401 Kelton St Bay City, MI 48706		72"Ø Precast Outlet Control Structure w/Overflow				
	5281 Lansing Rd Charlotte, MI 48813	2701 Chicago Dr SW Wyoming, MI 49519					
	4950 White Lake Rd Clarkston, MI 48346	3756 Centennial Rd Sylvania, OH 43560	Date 15 May 15	Revised	Rev. No.	Drawn By BmG	Scale NTS



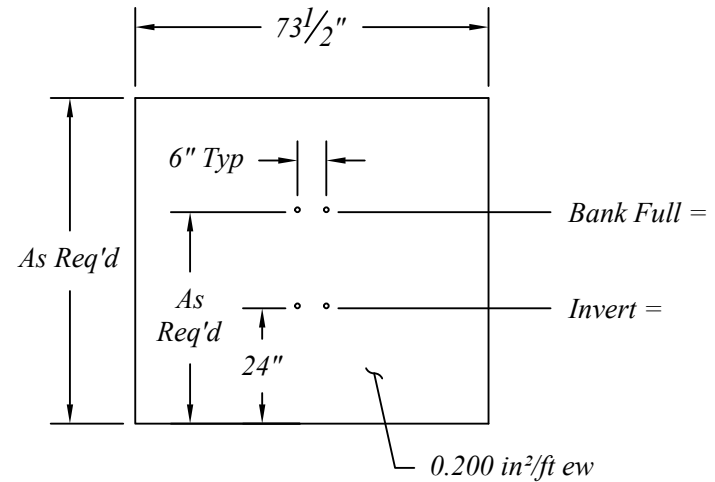
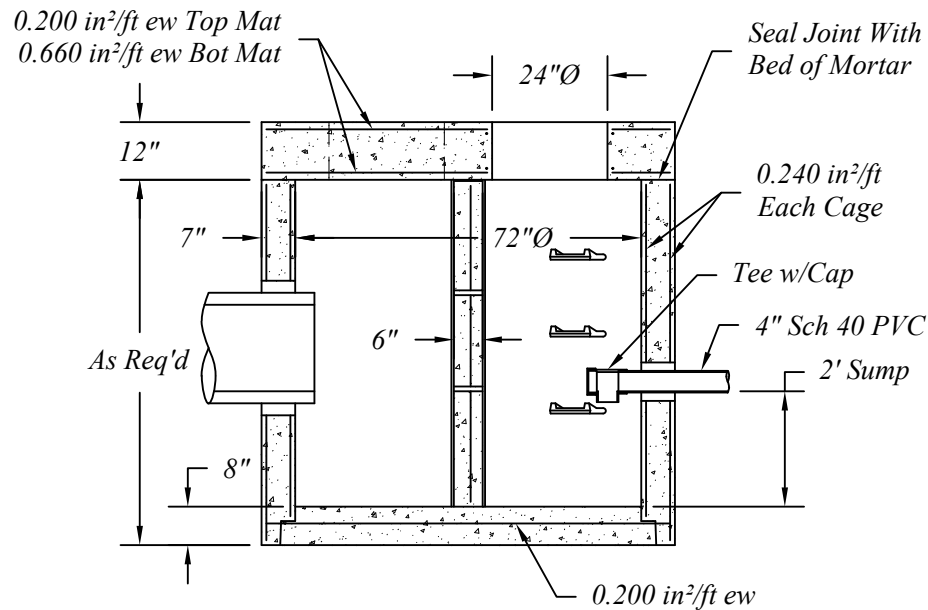
Manhole Sections To Be Manufactured To ASTM C-478 Specifications And In Accordance With Northern Concrete Pipe, Inc. (800 222 9918).


Reinforcing Shown For Schematic Only. All Steel Areas Are Minimums.

Contractor To Seal Between Precast Wall & Base w/Butyl Rope.

Inlet & Outlet Pipes Size Varies.

Number, Size and Elevation of Holes In The Flow Restrictor Wall Shall Be In Accordance With The Governing Agency.



	401 Kelton St Bay City, MI 48706		72"Ø Precast Outlet Control Structure w/o Overflow			
	5281 Lansing Rd Charlotte, MI 48813	2701 Chicago Dr SW Wyoming, MI 49519				
	4950 White Lake Rd Clarkston, MI 48346	3756 Centennial Rd Sylvania, OH 43560	Date 15 May 15	Revised	Rev. No.	Drawn By BmG
07.06b						